

# New Holland CX Super Conventional Combines

CX840 CX860 CX880

---



NEW HOLLAND



# Trade up to a CX Super Conventional



## Super capacity and comfort push your productivity to a new level.

Put a New Holland CX Super Conventional combine in your fields and move up to a new level of performance, convenience and comfort. What makes a CX a SUPER conventional? In short, CX combines have more threshing capacity, more separating capacity, more grain tank capacity and the fastest unloading rate than you'll find on the market.

### Super capacity

The CX threshing and separating system delivers unmatched harvesting capacity in any crop or condition. The CX combine features a massive 1,829-square-inch (1.18 sq. m) threshing area and an exclusive rotary separator that separates virtually all the grain before it reaches the straw walkers.

### Super-clean samples

The unique SLS self-leveling cleaning system provides a more natural, efficient and thorough way to clean grain. Total cleaning sieve area is an impressive 10,075 square inches (6.5 sq. m) and features the unusual ability to remain level when the combine's not. This allows grain to spread out and separate naturally on the undivided, full-width grain pan. The self-leveling system boosts capacity on flat ground, and maintains that capacity on slopes, corners and terraces.

### Super-fast unloading speed

The super capacity of a CX combine is matched by a super-size grain tank and a super-fast unloading speed. With a tank capacity of 330 bushels on the two largest models, you'll unload less frequently, and with the awesome 3-bushels-per-second unloading rate, it takes less time to unload.

### Super comfort, too

Another feature you'll rate as SUPER is CX comfort. Some may regard cab comfort as a "soft" feature, and low on their scale of importance. But when you step into the New Holland Harvest Suite™ cab, you'll quickly understand how it will benefit your bottom line. The Harvest Suite gives you more room and better visibility. It's designed not only for comfort, but for superior control. State-of-the-art instrumentation and controls give you an unsurpassed ability to monitor and adjust harvest performance.

### Super maneuverability

The CX combine is a big machine that turns like a small one. The CX has a longer wheelbase than many combines, yet has a shorter turning radius due to a unique offset kingpin steering geometry. As a result, you get the added benefits of a smoother ride and better maneuverability.

MODEL	SAE HP	GRAIN TANK CAPACITY (BUSHEL)
CX840	295	290
CX860	330	330
CX880	370	330

# The Harvest Suite™

## This cab gives you complete comfort and control.

Take a look inside the cabs of combines on the market today and you'll discover that the CX cab is a real standout. Its roomy dimensions, flowing style and efficient design put you in complete control. In fact, it's so roomy and luxurious, we call it the Harvest Suite™.

### A new dimension of comfort

The Harvest Suite boasts 110 cubic feet (3.12 cu. m) of room. You won't find a larger cab on the market. Sit in the plush, air suspension seat, and you'll notice extra space in all directions—even behind you. New Holland doesn't back you up against a wall. Behind the seat there's room for an optional cooler storage box. Storage areas are also provided below the driver seat, below the full-width instructional seat and under the armrest. On the back wall of the cab is a wide grain tank inspection window so you can easily check on grain quality and grain tank level.



Up to six stadium worklights frame the top of the windshield, with additional lights under the windshield, as well as two side "row-finder" lights. Four rearview mirrors are standard and two more are optional. You can position the two larger mirrors electrically from the cab.

### Adjusts to fit every operator

From the biggest and brawniest to the most petite, every operator feels at home in the Harvest Suite. In addition to the fully adjustable seat, the steering column adjusts three ways to fit you perfectly. Twelve adjustable air vents provide the perfect distribution of heat or air conditioning. The standard Automatic Temperature Control (ATC) automatically cools and warms to maintain the temperature that you have set. (Manual climate control on the CX840 small grain standard model.)

### The perfect views outside and in

The CX combine sports a huge, curved, tinted windshield and expansive side windows. There's 62.3 square feet (5.8 sq. m) of glass in all. When you combine this with the long feeder house, you have an exceptional view of the entire head. Your visibility after dark is also excellent. A total of 14 worklights give you 360-degree lighting.

You also have a great view of harvesting information inside the cab. The New Holland InfoView™ monitor is standard equipment, and provides customized performance information that allows you to quickly monitor a wealth of information including percent of engine load, cylinder speed, head height, engine rpm, sieve performance, straw walker performance, grain loss, returns and the self-leveling cleaning system. You can customize the screen to include the information you desire. You'll find programming keys for the InfoView monitoring system on the right-hand armrest.

Additional warning lights and indicators for fuel level and coolant temperature are incorporated into the right-hand cab post.



### Fingertip control

Rest your arm on the comfortable armrest control console and you have fingertip access to all cutting, feeding, threshing, separating and cleaning system controls, as well as the convenient multi-function control lever. This inline multi-function handle centralizes your command of forward/reverse



*Dual storage compartments behind the seat provide more storage area than other combines, including an optional cooler storage box.*



*You can customize the information reported on the InfoView™ monitor. An infinitely adjustable mounting arm lets you place it where it's best for you.*



*The right-hand armrest control console gives you fingertip control of all cutting, feeding threshing, separating and cleaning system controls.*

ground speed, as well as head height, reel position, reel speed, lateral float, unloading auger engagement and swing. You can move the armrest console forward or back to the position you like, then it moves along with the air-ride seat so controls are always right at your fingertips.

Operating the CX comes naturally.

Changing gears is as easy as rotating a dial from left to right through the four CX transmission speeds. Push-button crop settings allow you to quickly move from crop to crop and return to previous crop settings with the flip of a switch. Toggle switches allow you to control drum speed, fan speed and concave clearance. The speeds and

measurements are reported on the InfoView monitor. Optional toggle switches for the upper and lower sieves allow you to make on-the-go adjustments from the cab.

# Enormous harvesting capacity

## Unique threshing, separating and cleaning systems deliver maximum efficiency.

If we had to choose one word to describe CX harvesting capacity, it would have to be HUGE! Large components match the CX combine's huge appetite.

### A) Feeder house

The CX feeder house is wide for smooth intake of heavy crops, and long so you can easily see crop feeding and after-cut from the cab. An adjustable head face plate allows you to adjust the angle for different crops. The large

stone trap covers the full width of the feeder house for maximum protection.

### B) Threshing cylinder

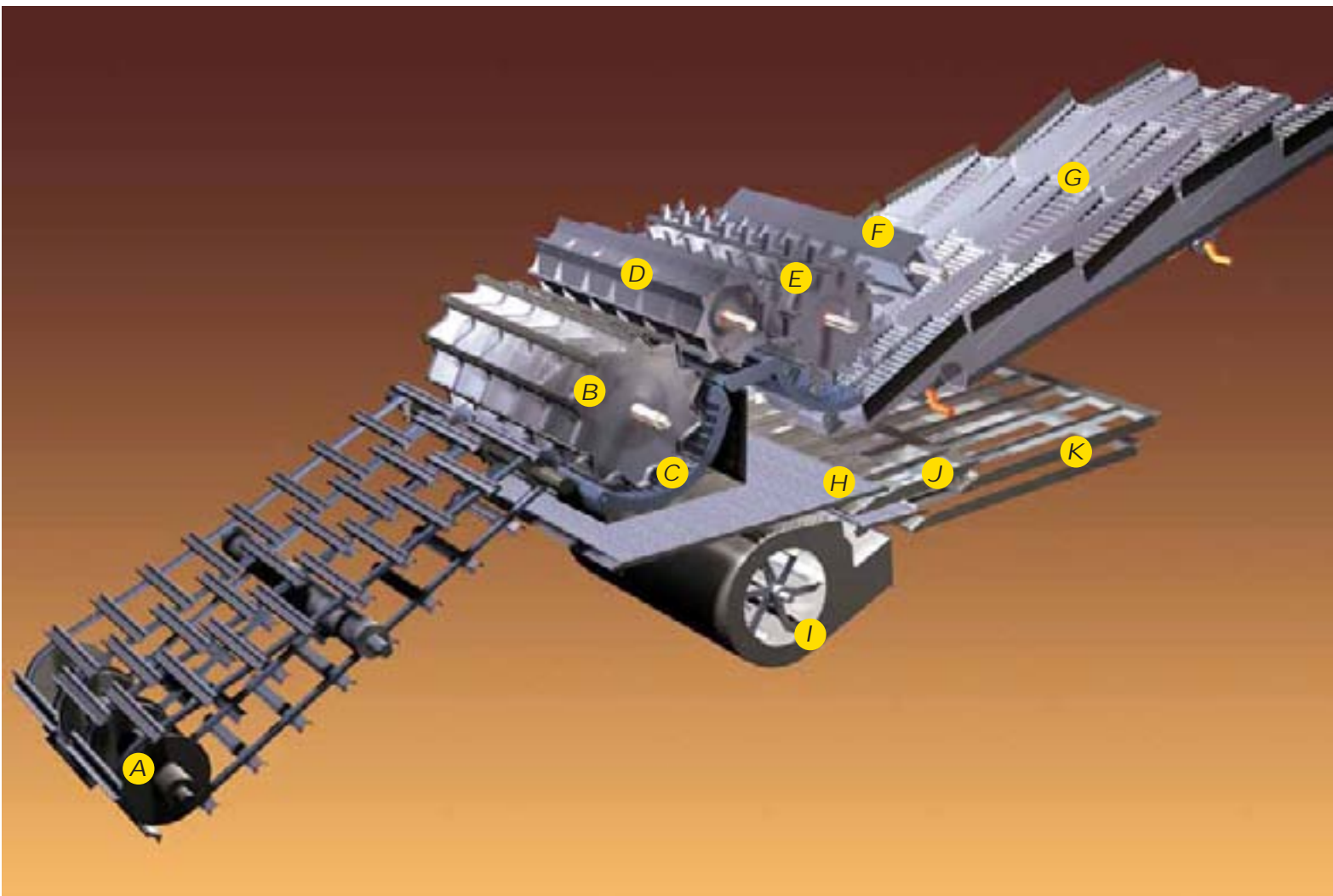
Using ten rasp bars to feed crop to the concave area, the heavy, 29.5-inch-diameter (750 mm) threshing cylinder acts as a flywheel, generating high inertia to smooth out peak loads. You can adjust drum speed from 305 to 905 rpm from the cab depending on the crop and conditions.

### C) Concave

The CX concave surface area is massive. It uses 16 bars and a wrap angle of 111 degrees, to provide 1,829 square inches (1.18 sq. m) of threshing area. You can adjust concave position from the cab.

### D) Beater

The CX beater uses eight fixed plates. It rotates at the same speed as the threshing cylinder to continue the separation action that started in the



cylinder area, then smoothly and quickly transition material to the rotary separator.

#### **E) Patented rotary separator**

New Holland's rotary separator uses a patented paddle system to agitate and slow the straw flow, separating nearly all of the grain before it is delivered to the straw walkers. Two speeds and two clearance settings allow you to make adjustments to best suit crops and conditions. The upper position provides maximum harvesting capacity in cereals. The lower position provides more gentle threshing in brittle straw and canola.

#### **F) Straw flow beater**

The straw flow beater directs material onto the first straw walker step and provides a fluffier straw mat for better grain separation. Clearance to the straw walkers has been increased compared to prior models.

#### **G) Straw walkers**

Sharply angled steps provide greater separating action and maximize crop flow to the cleaning system. The tapered bottom design gives even distribution onto the grain pan, which is especially important when working on slopes.

#### **H) Grain pan**

The large, 68-inch (1730 mm) CX grain pan has no dividers. This allows the grain to spread out, stratify and separate easily. The grain pan's oscillating motion lifts and deposits the grain repeatedly, and actually pre-classifies and levels the layer of grain before it gets to the pre-sieve. The heavier grain moves to the bottom of the mat when it approaches the end of the grain pan, the grain falls through the sieve openings, and the lighter chaff and straw are lifted up by a constant blast of air and blown rearward.

#### **I) Cleaning fan**

The patented, full-width New Holland cleaning fan draws air from both sides of the fan casing and from across the top. Unlike competitive smaller fan(s) which just deliver a small amount of high-speed air that's difficult to control, the large-diameter CX fan directs a huge volume of air continuously to the sieves for ultra-efficient cleaning. The constant air blast carries the chaff or cobs toward the rear, while the heavier grain falls through the pre-cleaning sieve. A second outlet directs a separate air blast to the pre-cleaning sieve independently of the main sieve air flow. You control fan speed from the cab, where the speed is reported on the InfoView™ monitor.

#### **J) Pre-cleaning sieve**

After grain falls from the grain pan, the adjustable pre-cleaning sieve immediately separates a quantity of grain and directs it to the bottom sieve. The grain pan, pre-sieve, and top sieve move in opposite reciprocating motion from the lower shoe and sieve assembly which helps eliminate vibration. A lever at the rear of the combine allows for easy adjustment.

#### **K) Top and bottom sieves**

The top and bottom sieves of the New Holland cleaning system are fully adjustable and provide a massive cleaning area of 10,075 square inches (6.5 sq. m). An optional remote sieve adjustment allows you to make adjustments from the cab or by using rocker switches at the rear of the machine. Sieve settings are reported on the InfoView monitor. The grain pan and top sieve on the CX move together with a long stroke while the bottom sieve moves in the opposite direction with a shorter stroke. This action results in increased capacity, low grain loss, and a smooth, vibration-free cleaning action.



**The SLS self-leveling cleaning system delivers an ultra-clean sample on flat land and on hills.**

The entire CX cleaning system, including the fan, grain pan and sieves, is kept level, even on slopes up to 17%. An inclinometer mounted on the combine main frame constantly monitors the horizontal attitude of the combine and adjusts the position of the cleaning system automatically. Grain continues to separate and stratify easily on the open-design grain pan, allowing the CX cleaning system to operate at full capacity—even on hillsides, corners and terraces.

# Superior grain and residue handling

## Large grain tanks and fast unloading save you time.

Since CX combines are some of the biggest and fastest combines on the market, it's only natural that they would offer the biggest grain tanks and fastest unloading speeds. New Holland CX combines give you complete and effortless control of grain storage, grain unloading and residue management.

### Immense grain tanks

CX grain tanks are the largest in the industry—290 bushels for the CX840 and 330 bushels for the CX 860 and

CX880. These huge grain tanks are positioned directly above the traction wheels for ideal weight distribution, maximum traction and machine stability. Grain tank covers are optional and can be raised and lowered by controls from the cab. To sample grain in the tank, an access door is provided on the front of the grain tank beside the cab door. A very large rear cab window allows for a panoramic view of the grain tank sample.

Two adjustable sensors are mounted in the grain tank to keep you informed of grain level. When grain reaches the first sensor, the grain tank is 75% full, and you are alerted in the cab with an alarm and blinking light, while orange

rotating beacons on the cab roof alert your grain cart operator. At 100% capacity, the in-cab light glows continuously and a second alarm sounds.

### Unload at 3 bushels per second

The CX unloading auger system can be described as phenomenal. This overhead-style unloading auger empties the grain tank at a 3 bushels per second average unload rate. That's the fastest unloading speed of any conventional combine — twice as fast as some other combines. You extend the unloading tube hydraulically with the push of a button. Choose an 18- or 21-foot unloading auger to accommodate heads up to 42 feet wide.



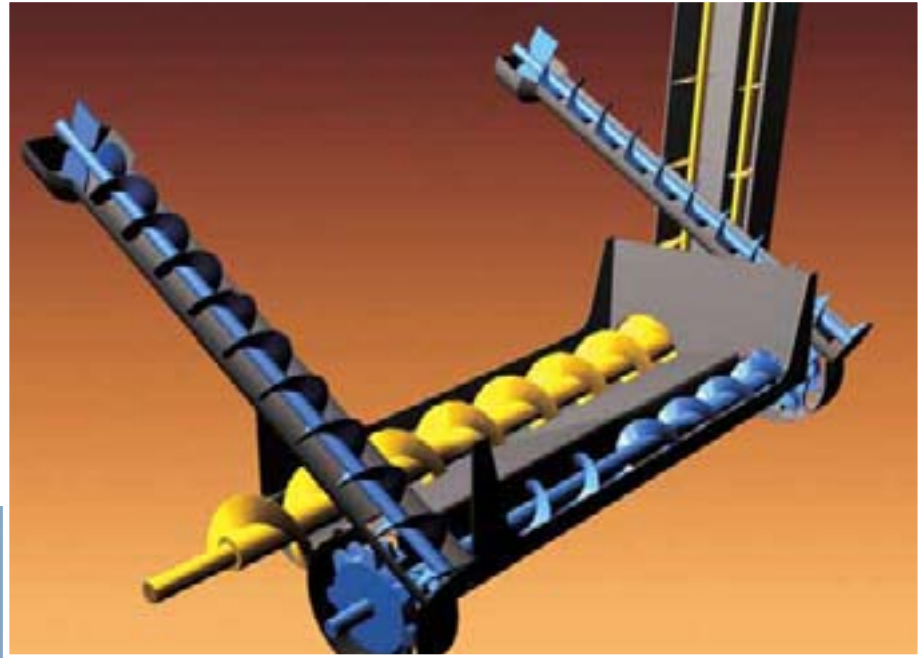
*New Holland's optional straw chopper delivers superior chop quality. You adjust the right-hand and left-hand spread with a single lever, or add the optional in-cab adjustment.*



## Complete residue management

The CX residue management system allows you to control both chaff and straw with the flip of a lever. The New Holland straw chopper uses dual, reversible, serrated knives to deliver a fine cut length and a chop quality that's the best in the industry. You can control the dividers on the spread hood manually or with an optional in-cab control. To windrow the straw, simply flip the lever and straw passes over the chopper and falls to the ground in a loose windrow. The CX offers you the ability to windrow straw and spread chaff or chop and spread straw and chaff.

*A double returns system delivers any unthreshed grain to two sets of spike-tooth roto-threshers. Here, the grain is vigorously threshed and delivered to the grain pan—not the threshing drum—so the capacity of the main threshing area is not reduced and grain quality is maintained. The InfoView™ monitor keeps you informed of the returns volume status.*



*Ample grain tank storage—330 bushels for the CX860 and CX880, and 290 bushels for the CX840—means you can operate longer between unloading.*

# Power that keeps you on the go

## Electronically controlled engines provide long life and easy maintenance.

CX engines deliver the power, torque and fuel efficiency you demand for your harvesting operation. These six-cylinder diesels use electronic fuel governing systems to maximize fuel economy and give you quick response and extra power

when you need it. Ample torque back-up gets you through the most difficult harvesting conditions without loss of threshing speed.

## Convenient engine access

CX engines are easy to service. A convenient, fold-down ladder provides quick access to the large, rear service deck where you can conveniently access engine service points, the fuel tank and the



grain tank. The large 198-gallon (750 L) fuel tank capacity allows for up to 16 hours of continuous operation.

**Large, easy-open side shields**

Full-length, “gull-wing” side shields glide open on gas struts to provide you with quick and easy access for routine maintenance. Service platforms and steps provide a secure, easy way to reach all service areas. Two large access panels and the stone trap door provide unrivaled access to the threshing drum and concave. The feeder house has a large access door on top and the complete feeder house can easily be removed from the base unit for full access to the threshing drum.



“Gull-wing” side shields provide complete service access.

MODEL	HP	DISPLACEMENT	POWER BOOST
CX840	295	7.5 L New Holland	27 hp
CX860	330	7.8 L Iveco Cursor	27 hp
CX880	370	10.3 L Iveco Cursor	27 hp



A large rear service deck provides easy access to all major engine service points as well as the grain tank.



With the engine cover panel open and raised, the entire engine area is readily accessible.

# Superior head flotation

## Terrain Tracer™ and Autofloat™ allow you to harvest every bit of your crop in uneven terrain.

The dangers of harvesting over rough or uneven ground are twofold. You risk header damage from bulldozing, and you risk leaving valuable crop in the field. CX combines minimize those risks.

### Terrain Tracer™ lateral float

The New Holland Terrain Tracer™ lateral float system automatically raises the head vertically and tilts the head laterally (except 76C windrow pickup and 94C draper heads, which have a built-in spring floating system) so the full width of the head stays at the cutting height you set. This allows you to get every bit of grain you grow and takes the worry out of harvesting low-growing

crops on uneven terrain. The head is attached to a pivoting cradle on the front of the feeder house and pivots by means of a hydraulic cylinder that you activate electronically from the cab, or automatically through the use of sensors on the head that maintain stubble height (standard on flex heads, optional on rigid heads). A memory switch allows you to store frequently used head heights. In all cases, the automatic Terrain Tracer system can be manually overridden.

### Three head height modes

CX combines give you complete control of head height with two standard and one optional operating mode. The

status bar on the InfoView™ monitor lets you know which mode is in operation.

In compensation mode, the head operates in contact with the ground—ideal when harvesting downed crop or low-growing crops like peas or beans. You set the ground contact pressure, and the system maintains that pressure by monitoring head hydraulic cylinder pressure.

In stubble height mode, the head operates at a specific height from the ground, which you select. At the headlands or when you need to raise the head momentarily, you can automatically return the head to its preset height with a single switch pulse.

With the Autofloat™ head height control (standard on the CX840 Deluxe, CX860 and CX880, only automatic head vertical control is available on the CX840 Standard), potentiometer sensors are installed on the head that measure and monitor head height. Not only does the Autofloat system maintain a pre-selected stubble height, it adjusts the head both vertically and laterally in response to changing ground contours.

If the head should contact the ground when you're operating in stubble height mode or Autofloat mode, the compensation mode will automatically take over, allowing the head to follow the ground to protect the head and cutterbar. After the head clears the ground, it automatically returns to the preset stubble height.

### The best feeder reverser

If you encounter a heavy slug of crop, New Holland's exclusive feeder reverser clears it quickly and easily. Unlike other reversers, the CX reverser



*An easy, one-lever latching system on the left side of the feeder house operates both left and right latches simultaneously. A hydraulic multi-coupler engages all hydraulic lines with one over-center latch. It eliminates the need to hook up each head hydraulic circuit one at a time. It's a system that's quick, convenient and far less messy.*



allows you to inch the feeder both forward and backward, so you can “rock” crop slugs free and slowly feed them into the threshing area. You don’t have to leave your seat.

### **Big hydraulic capacity handles big heads**

CX Series combines easily drive the widest, high-capacity heads thanks to a closed-center load-sensing (CCLS) hydraulic system. Increased hydraulic

flow, higher operating pressure and large-diameter lift cylinders make quick, easy work of even the largest heads. (Turn the page for complete head information.)

### **Fast head attachment**

Most other combines have head latches and hydraulic hook-ups on both sides of the feeder house, and require you to kneel on the ground or crawl under the machine. Not so with a CX

combine. An easy, one-lever latching system on the left side of the feeder house operates both left and right latches simultaneously to provide safe, secure, fast head connection. A hydraulic multi-coupler provides one-step quick connect and disconnect for all head functions, and a single-location electrical hookup makes connecting the wiring harness easy, too. Both the hydraulic and electrical hook-up are conveniently located in the same area as the head latching system.

# Smooth-feeding heads

Choose the high-capacity heads that match your operation.



## 76C Windrow Pickups

New Holland 76C windrow pickups match the super capacity of CX combines and are available in 12- or 14-foot widths, in Swathmaster™\* or Rake-Up™\* design.

SwathMaster Belt Pickups use four individual rollers, a pickup belt that gently lifts crop into the head and a draper belt that carries it to the auger and into the feeding area. Pickups are available with a mechanical-adjust front and rear windguard, or both a front and rear windguards with hydraulic adjustment from the cab.

The Rake-Up design pickup features a front and rear windguard with hydraulic adjustment from the cab. The Rake-Up heads are designed for use with all small grains and specialty crops including canola. They handle crop more gently by utilizing a sideways sweeping action to deliver crop onto a slatted transfer belt. The sideways raking action of the tines, along with a slower pickup speed and a steeper entry angle, reduce stone pickup and stone damage to the combine. The more positive crop pickup of this design helps these windrow

pickups excel in difficult harvest conditions like short, rained-down or sprouted crop.

## 94C Grain Belt Heads

The 94C grain belt head uses two 42-inch-wide draper belts to feed cereal grains or specialty crops to an extra-wide center belt. A self-contained hydraulic system supplies smooth, reliable power to both the draper belts and the knife drive without the use of V-belts, pulleys and chains. You can adjust belt speed using flow control and flow divider valves. A simple turnbuckle allows for fast, easy adjustment of the knife angle,



and an optional reel fore and aft adjustment kit provides you with increased crop harvesting versatility. Deck shift options on the 30-, 36-, 39- and 42-foot models let you quickly convert from combining to swathing.

*\* Swathmaster™ and Rake-Up™ are trademarks of Precision Metal Fabricating, LTD.*

MODEL	HEAD TYPE	SIZES
76C	Windrow pickup	12', 14' ----
94C	Grain draper	25', 30', 36', 39', 42'
72C	Direct-cut rigid cutterbar	20', 25' 30'
74C	Direct-cut flex cutterbar	20', 25', 30'
98C	Corn	6 row, 30", 36", 38" spacing 8 row, 30", 36", 38" spacing 12 row, 20", 22", 30" spacing



### 72C Rigid Cutterbar Auger Heads 74C Flexible Cutterbar Auger Heads

Both the 72C and 74C cut crop cleanly and quickly, then deliver it smoothly and evenly to the feeder house to increase the capacity of the entire combine. The difference: the 74C uses a flexible cutterbar that provides up to 4.5 inches of flex to closely follow the ground contour and pick up downed or low-growing crops.

The impressive 1020- to 1050-spm knife speed of the 72C and 74C lets you harvest effectively at higher ground speeds. A large 42-inch-diameter (1.07 m) reel delivers crop to the cutterbar, then the 26-inch-diameter (660 mm), full-floating auger feeds smoothly even in the heaviest crop conditions. Both reel and auger are fully adjustable to match different crops and conditions. A single lever allows you to adjust reel finger angle, and fore and aft reel position can be adjusted hydraulically from the CX cab. You can also use the InfoView™ monitor to maintain a preset ratio between reel speed and ground speed for consistent feeding at various

ground speeds, better efficiency and less wear on you!

### 98C Corn Heads

Durable construction and efficient design make the 98C the most productive corn head, even in the toughest field conditions. These heads



specialize in taking in less trash for more harvesting capacity, and actually help to make your harvest go faster. The low-profile divider snouts get under downed corn and pick it up better than other corn heads, while the slippery polyethylene surface of the shields, fenders and points allow for fast, smooth feeding so you can harvest at faster ground speeds. The color-impregnated polyethylene also absorbs impact for less ear

bounce/loss, never rusts and never needs to be painted. The shields on the 98C flip up and out of the way for complete service access and easy transport.

The Model 98C features heavy-duty cast iron row unit gearboxes to drive and support the stalk rolls. The heat-treated, large-diameter stalk rolls allow for a high knife tip speed, and their straight-fluted design provides more aggressive stalk pull down than a tapered stalk roll. Individual row-unit slip clutches provide immediate protection from plug overloads. Optional hydraulic stripper plates can be adjusted from the cab for improved performance in varying crop conditions. Automatic head height control and lateral float (Terrain Tracer™) is now available as an option on the 98C corn heads.

# Maximize your yields

## The New Holland fully integrated precision farming system helps you farm more profitably.

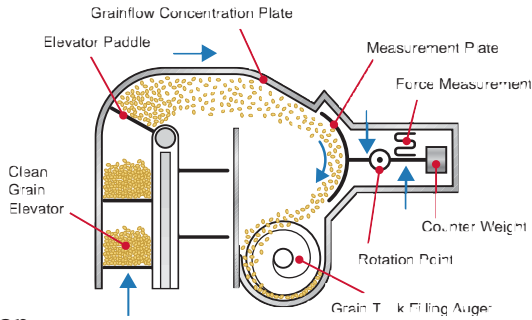
The New Holland “Precision Land Management System” (PLMS) helps take the guesswork out of managing your land’s performance. The benefits of precision farming are fully integrated into the design of the CX combine.

Select from these factory- or field-installed options:

- An economical moisture-only monitor for on-the-go moisture readings — A New Holland exclusive.
- Yield and Moisture Monitor.

- Yield and Moisture Monitor with data logging and mapping software.
- Full precision farming package including DGPS (Differential Global Positioning System) receiver.
- Optional in-cab printer.

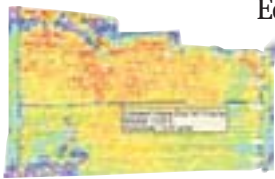




*The patented New Holland grain mass flow sensor delivers high-accuracy readings regardless of the crop and only requires a single calibration for use in all crops*

### Extreme accuracy with only one calibration per season

The exclusive, patented New Holland yield monitor uses a unique grain mass flow sensor to provide you with extremely accurate measurements on the go. And, unlike other yield measurement systems, performing a single crop calibration will calibrate all the other crop types. Only one calibration in one crop per season is required. This is because the curved sensor plate incorporates a pivoting device and counterweight that neutralizes the weight of the different kinds of grain as well as keeps the system balanced on sloping terrain. The result: a precise measurement no matter what the crop or condition.



and displays the moisture content on the InfoView™ monitor.

### Map it, analyze it and print it

The next step is to use the valuable field data you collect with the yield and moisture sensors to prepare yield maps and better understand yield variations. Equip your CX combine with New Holland's DGPS receiver and data logging systems, and yield and moisture readings are stored on a data card, which you can then download into a personal computer. New Holland PLMS mapping software allows you to view and thoroughly

analyze the data. In addition, PLMS desktop software allows for on-the-go mapping and data conversion from the yield monitor system. An optional in-cab printer allows operators to print harvest summary data using the InfoView™ system.



The CX moisture sensor is mounted in the clean grain elevator housing and constantly samples the grain, measures its electronic conductivity, then calculates



*The New Holland global positioning receiver with differential correction (DGPS) reports your precise geographic location as you harvest. It is capable of receiving free Coast Guard beacon differential and WAAS differential, as well as L-Band satellite differential (subscription fee required). The receiver also supports lightbar guidance operations.*



*The New Holland data logger is installed in the side cab headliner and can be easily removed and installed in your tractor cab to use with application equipment.*

# Specifications

MODEL	CX840	CX860	CX880
<b>ENGINE</b>			
	4-stroke New Holland diesel	4-stroke New Holland diesel	4-stroke New Holland diesel
Displacement	7.5 L	7.8 L	10.3 L
SAE hp at 2100 rpm	295 hp	330 hp	370 hp
Electronic fuel management	Yes	Yes	Yes
Power boost for unloading on the go	27 hp	27 hp	27 hp
Fuel tank capacity	198 gal. (750L)	198 gal. (750L)	198 gal. (750L)
Grain tank capacity	290 bu. (10,220 L)	330 bu. (11,630 L)	330 bu. (11,630 L)
<b>TRANSMISSIONS</b>			
	..... Hydrostatic drive, 4-speed gearbox.....		
<b>HARVEST SUITE™ CAB</b>			
Glass area	62.3 sq. ft. (5.8 sq. m)	62.3 sq. ft. (5.8 sq. m)	62.3 sq. ft. (5.8 sq. m)
Cab volume	110 cu. ft. (3.12 cu. m)	110 cu. ft. (3.12 cu. m)	110 cu. ft. (3.12 cu. m)
<b>FEEDER HOUSE</b>			
Width	62 in. (1.58 m)	62 in. (1.58 m)	62 in. (1.58 m)
Number of chains	4	4	4
Hydraulic feeder/reverser	Standard	Standard	Standard
<b>THRESHING CYLINDER</b>			
Diameter	29.5 in. (750 mm)	29.5 in. (750 mm)	29.5 in. (750 mm)
Width	62 in. (1.58 m)	62 in. (1.58 m)	62 in. (1.58 m)
Number of bars	10	10	10
Speed range	305-905 rpm	305-905 rpm	305-905 rpm
	..... (Electrical adjustment and digital readout in cab) .....		
<b>CONCAVE</b>			
Number of bars	16	16	16
Angle of wrap	111°	111°	111°
Width	62 in. (1.58 m)	62 in. (1.58 m)	62 in. (1.58 m)
Area	1,829 sq. in. (1.18 sq. m)	1,829 sq. in. (1.18 sq. m)	1,829 sq. in. (1.18 sq. m)
Adjustment from cab	12 electrical settings	12 electrical settings	12 electrical settings
De-awning plates	..... Two, fitted to concave, individual adjustment .....		
<b>BEATER</b>			
Drum-type	8 blades	8 blades	8 blades
Speed	..... 1:1 of threshing cylinder, 305 to 905 rpm .....		
Diameter	18.75 in. (475 mm)	18.75 in. (475 mm)	18.75 in. (475 mm)
Beater concave area	..... 450 sq. in. (.29 sq. m)..Concave adjustable to two positions .....		

MODEL	CX840	CX860	CX880
<b>ROTARY SEPARATOR</b>			
Width	62 in. (1.58 m)	62 in. (1.58 m)	62 in. (1.58 m)
Diameter	28 in. (720 mm)	28 in. (720 mm)	28 in. (720 mm)
Number of paddle bars	12 paddle bars	12 paddle bars	12 paddle bars
Speed	..... 323/630 rpm. Quick speed change without tools .....		
Concave area	..... 1,441 sq. in. (.93 sq. m). Concave adjustable to two positions .....		
<b>STRAW FLOW BEATER</b>			
Diameter	12.5 in. (315 mm)	12.5 in. (315 mm)	12.5 in. (315 mm)
Number of blades	4	4	4
Speed	1144 rpm	1144 rpm	1144 rpm
<b>STRAW WALKERS</b>			
Number	6	6	6
Length	144.5 in. (3.67 m)	144.5 in. (3.67 m)	144.5 in. (3.67 m)
Total straw walker area	9,192 sq. in. (5.93 sq. m)	9,192 sq. in. (5.93 sq. m)	9,192 sq. in. (5.93 sq. m)
Shaft speed	215 rpm	215 rpm	215 rpm
Total separating area	11,082 sq. in. (7.15 sq. m)	11,082 sq. in. (7.15 sq. m)	11,082 sq. in. (7.15 sq. m)
<b>CLEANING SYSTEM</b> Self-leveling cleaning shoe w/ automatic leveling on slopes up to 17%			
Grain pan with no dividers, length	68 in. (1730 mm)	68 in. (1730 mm)	68 in. (1730 mm)
...Area	4,236 in.2 (2.73 sq. m)	4,236 in.2 (2.73 sq. m)	4,236 in.2 (2.73 sq. m)
Pre-cleaning sieve area	2,207 sq. in. (1.42 sq. m)	2,207 sq. in. (1.42 sq. m)	2,207 sq. in. (1.42 sq. m)
Top sieve area	3,540 sq. in. (2.28 sq. m)	3,540 sq. in. (2.28 sq. m)	3,540 sq. in. (2.28 sq. m)
Lower sieve area	3,540 sq. in. (2.28 sq. m)	3,540 sq. in. (2.28 sq. m)	3,540 sq. in. (2.28 sq. m)
Extensions (Rake, Fingers, etc.)	788 sq. in. (.51 sq. m)	788 sq. in. (.51 sq. m)	788 sq. in. (.51 sq. m)
Total cleaning sieve area (Not including the active grain pan area)	10,075 sq. in. (6.5 sq. m)	10,075 sq. in. (6.5 sq. m)	10,075 sq. in. (6.5 sq. m)
<b>CLEANING FAN</b>			
Number of blades	6	6	6
Speed range	..... Variable from 475 to 900 rpm, electrical adjustment from cab .....		
<b>UNLOADING AUGER</b> ..... Over the top turret style with 105° positioning .....			
Unloading speed	3.0 bu/sec (63 L/sec)	3.0 bu/sec (63 L/sec)	3.0 bu/sec (63 L/sec)
<b>DIMENSIONS</b>			
Maximum height (w/ 900/60 R32 drive tires/wheels)	13 ft. (3.96 m)	13 ft. (3.96 m)	13 ft. (3.96 m)
Maximum width (w/ 900/60 R32 dished out)	14.42 ft. (4.395 m)	14.42 ft. (4.395 m)	14.42 ft. (4.395 m)
(w/ 900/60 R32 dished in)	13 ft. (3.96 m)	13 ft. (3.96 m)	13 ft. (3.96 m)
Maximum length (w/ feeder totally raised)			
(to end of straw chopper deflectors)	29.7 ft. (9.05 m)	29.7 ft. (9.05 m)	29.7 ft. (9.05 m)
(to end of unloading tube)	32.7 ft. (9.97 m)	32.7 ft. (9.97 m)	32.7 ft. (9.97 m)
<b>WEIGHT</b>			
Standard version without header	33,950 lb.* (15400 kg)	34,171 lb.* (15500 kg)	34,832 lb.* (15800 kg)

\* varies significantly with machine configurations

# You'll find it at the blue and white sign.

Globally, we're a valued leader in innovative agricultural and construction equipment and a wide range of financial services.

Locally, we're your trusted New Holland dealer — the specialist at the blue and white sign who's always there with the equipment, parts, service and financing you and your operation need.

Together, we're working to deliver the best value in today's dynamic world economy.

**With productive equipment.** You won't find a more complete and modern line of tractors, haytools, combines and crop production equipment — with a wider selection of models offering the latest performance, convenience and comfort features — than at your New Holland dealer.

**With quality parts and service.** Turn to your New Holland dealer after the sale for expert, factory-trained service and genuine New Holland-branded parts to keep you working productively. After all, you've placed your confidence in the best equipment, and you deserve the finest support — whether at the service counter or in the field.

**With financing solutions.** Your New Holland dealer can tell you about smart ways to maximize cash flow, preserve working capital and protect what's important.

With a portfolio of innovative financial services available through CNH Capital, like customized financing, leasing, insurance, and the purchasing convenience of a Commercial Revolving Account, your New Holland

Financing provided by  
**CNH Capital**

dealer can turn your financial challenges into opportunities. You name it — equipment, parts and service, financing, or just trusted, honest advice on farming and finance — you'll find it all at the blue and white sign. Around the world, or right down the road, we're the company you can always turn to.



**YOUR NEW HOLLAND DEALER**



After all, you've placed your confidence in the best equipment, and you deserve

the finest support — whether at the service counter or in the field.

Your New Holland dealer can tell you about smart ways to maximize cash flow, preserve working capital and protect what's important.



Visit our Web site at [www.newholland.com/na](http://www.newholland.com/na) Or, call toll-free: 1-888-290-7377

Design, materials and/or specifications are subject to change without notice and without liability therefor. Specifications are applicable to units sold in Canada, the United States, its territories and possessions, and may vary outside these areas.

© 2006 CNH America LLC  
New Holland is a registered trademark of CNH America LLC.



Safety begins with a thorough understanding of the equipment. Always make sure you and your operators read the Operator's Manual before using the equipment. Pay close attention to all safety and operating decals and never operate machinery without all shields, protective devices and structures in place.

NH1050315 • 050603 • API • PRINTED IN U.S.A.