



NEW HOLLAND

D85B D95B CRAWLER DOZERS



- Tier III Certified Engine
- Outstanding Push Power & Blade Force
- Industry-leading SAE Maintainability Index
- Sloped Engine Hood Design for Excellent Visibility to the Cutting Edge



BUILT AROUND YOU

PERFORMANCE THAT INCREASES YOUR RETURN ON INVESTMENT

New Holland B Series crawler dozers handle tasks more efficiently, thanks to a long list of power and design advantages. Operators perform more efficiently with superior visibility, comfort, easy operation, and hassle-free servicing.

Tremendous power

- Outstanding pushing power
- Superior blade forces
- Industry-leading track forces

Increased visibility and control

- An outstanding view from the operator's seat
- Spacious, comfortable operator compartment
- Low-effort steering, speed, and blade control
- Control sensitivity adjusts to each operator's preference

Servicing ease

- Industry-leading SAE maintainability index
- Platform or cab tilts over for complete access to pumps and components
- Easy-clean undercarriage design
- Easy-open front grill and service panels provide access to service checkpoints from the ground, without tools
- Convenient sight glasses for fast fluid checks

Ask your dealer for a demonstration to see how a New Holland crawler dozer can increase your return on investment.



Easy angle changes

With the optional variable pitch blade adjustment, it's easy to adjust the blade angle between the 52-degree carrying angle and the 60-degree cutting angle.

New Holland crawler dozers deliver an exceptional view to the blade cutting edge.





New Holland B Series Crawler Dozers are US EPA Tier III certified for low emissions.

MOVE MORE DIRT PER HOUR

These state-of-the-art dozers maximize productivity with outstanding power and smooth, responsive hydraulic control.

Industry-leading push power and blade forces

- Larger-size hydrostatic components than similar-size dozers provide higher pressures and higher flows
- Better track force and push power—especially at slow speeds
- Blade angle forces up to 31,000 pounds (14,061 kgf)
- Blade angle torque up to 85,250 foot-pounds (38,669 kgf)
- Work in the toughest ground conditions
- Perform difficult tasks such as dislodging tree stumps, foundations, and footers

Proven engine

- Reliable, fuel-efficient, turbocharged New Holland engines
- Cleaner-burning design benefits the environment
- Integral water pump and oil cooler
- Poly-V belt with automatic belt tensioning

Triple-reduction final drive

- Two helical-cut reductions plus planetary output provide longer life and reduced noise
- Exceptional ground clearance—unlike triple-reduction systems that use bull gears and pinions and place the output housing close to the ground



	D85B	D95B
Net horsepower	85 hp (63 kW) @ 2,000 RPM	96 hp (72 kW) @ 2,200 RPM
Operating weight, lbs (kg)		
LT (Long Track)	18,895 (8569)	19,629 (8902)
WT (Wide Track)	19,700 (8936)	20,200 (9163)
LGP (Low Ground Pressure)	20,191 (9163)	20,724 (9399)
Blade capacity, cu yd (m³)		
LT (Long Track)	2.16 (1.65)	2.16 (1.65)
WT (Wide Track)	2.32 (1.77)	2.52 (1.93)
LGP (Low Ground Pressure)	2.60 (1.99)	2.73 (2.09)

Superior blade forces allow New Holland dozers to perform tough earth-moving jobs.

BUILT-IN COMFORT, LOW-EFFORT CONTROL

Whether you prefer a ROPS model or the comfort of a heated and air-conditioned cab, you will appreciate the exceptional visibility and easy controls of a New Holland crawler dozer.

An outstanding view to the cutting edge

- Sloped, tapered engine hood provides excellent visibility to the cutting edge
- Four front halogen lights and two in the rear for work in low-light conditions

The ultimate in operating ease

- Steer and change speed and direction with one, low-effort lever
- Comfortable palm-grip lever provides complete blade control
- A friction control lock on the transmission lever acts as a cruise control to maintain forward or reverse travel speed

Respect for operator preferences

- Three control sensitivity levels match different operating styles—adjust steering sensitivity, shuttle speed, and maximum transmission speed
- Turn a knob to set reverse shuttle speeds—from 80% to 130% of forward speeds

Spacious and comfortable

- Plenty of leg and foot room, with high and low foot rests
- Deluxe mechanical suspension seat adjusts for height, fore and aft, lumbar support, thigh support, and backrest position
- Optional air-ride seat provides an even smoother ride



Single-lever transmission control

Shift, turn, or change direction with your left hand. Push the lever fore and aft for infinitely variable speed between 0–6 mph. Two buttons on the lever allow you to bump up or down one level at a time with the touch of your thumb. Move the lever left or right to steer. Push the lever all the way to the left or right to counter-rotate the tracks and turn 180 degrees on the spot.



The instrument cluster provides system information with analog gauges and warning lights.



You can adjust PAT blade lift, angle, and tilt hydraulically to match the task at hand—finish grading, ditching, backfilling, or spreading.



Wide-track machines are ideal for forestry operations, where ground conditions are relatively firm, but the machine regularly works on steep slopes.



For forest and land clearing work, add guarding options including operator compartment screens.

TRACKS AND ATTACHMENTS TO MATCH YOUR APPLICATIONS

New Holland crawler dozers are available in three different track configurations—LT, WT, or LGP. Advanced track life is also offered as an option for all three track configurations.

LT (Long Track)

- Standard with a narrow track gauge and narrow track shoes
- Typically used for firm ground conditions and where there is minimal slope work
- Favored when the focus is on maximum tractive effort and less focus on lateral stability
- Delivers the highest ground pressure

WT (Wide Track)

- An intermediate choice between the LT and LGP
- Use for firm ground conditions, but in sloped areas that need additional lateral stability
- Similar tracks shoes to the LT, but the track gauge is expanded to the width of the LGP

LGP (Low Ground Pressure)

- Wider track gauge and wider, center-mounted track shoes
- Low ground pressure for better flotation in soft, swampy ground conditions
- Provides maximum lateral stability

Power angle and tilt (PAT) blades

- Versatile to handle a wide range of tough jobs
- Available blade widths of 98, 104, 110, 120, 124, or 130 inches

Equipped for versatility

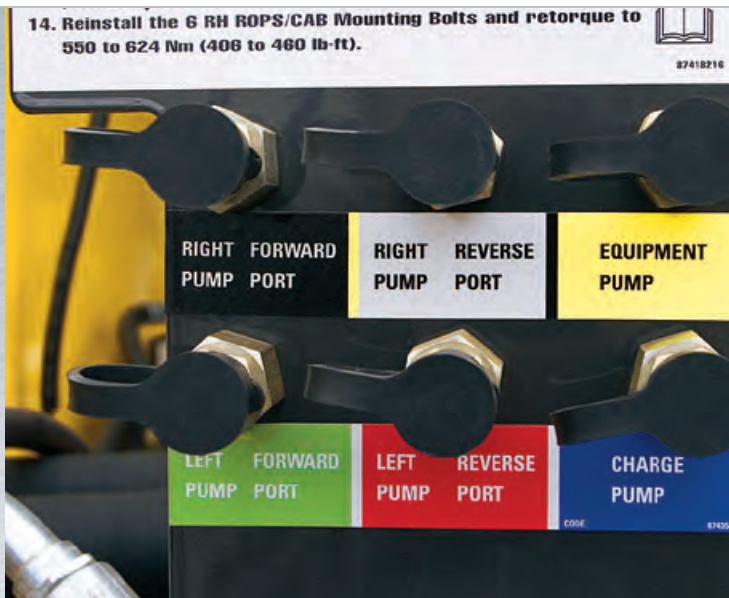
- A multi-function control valve makes it easy to add and control attachments or auxiliary equipment
- Mechanical PTO powers attachments such as winches
- Standard retrieval hitch or optional two-position drawbar

Optional attachments

- Parallelogram high-clearance ripper rips up to 14.3 inches (363 mm) deep in difficult terrain like rock or hard-packed soil
- Allied Systems winch provides swift, secure movement of large objects, such as felled trees

Accessories for special applications

- Rear screen
- Brush guards
- Side forestry screens
- Severe-duty radiator guard



A centralized hydraulic diagnostic test panel easily verifies system pressures.



The hinged front grill allows easy radiator and cooler cleanout.



Easy-tilt platform

New Holland's tilt-over cab/platform provides quick, unmatched service access to hydraulic pumps and powertrain components.

TIME-SAVING SERVICING

New Holland crawler dozers have the leading SAE point score for periodic maintenance compared to other dozers. That means less time and money maintaining your equipment and more time on the job making money.

Fast routine maintenance

- Maintenance points are conveniently grouped together
- Engine and service compartment panels are easy to open from the ground and without tools
- Hydraulic sight glass, radiator sight bubble, and coolant bottle provide easy fluid-level checks with a quick glance
- Filters are easy to reach and change—including spin-on, vertically mounted hydraulic filters that can be reached through a hinged door

Easy undercarriage and track cleanout

- No-hassle cleaning even after operating in sticky, muddy, or freezing conditions
- The open final drive area and open chassis design provide a large escape route for rocks and mud
- Steep-angle covers on the track frame and streamlined track frame supports shed dirt easily

Sealed and Lubricated Track (SALT) chain

- Substantially reduces track wear to extend track life
- Reduces noise levels
- Four springs and cast-steel buttons keep the idler tight to the track frame
- Standard clipped shoes aid turning, reduce track binding and minimize damage to concrete or asphalt when turning

Onboard diagnostics

- Simplifies trouble-shooting and minimizes costly downtime
- A diagnostic pressure test panel and a cab-accessible electrical system diagnostic display provide fault codes to spot potential problems quickly

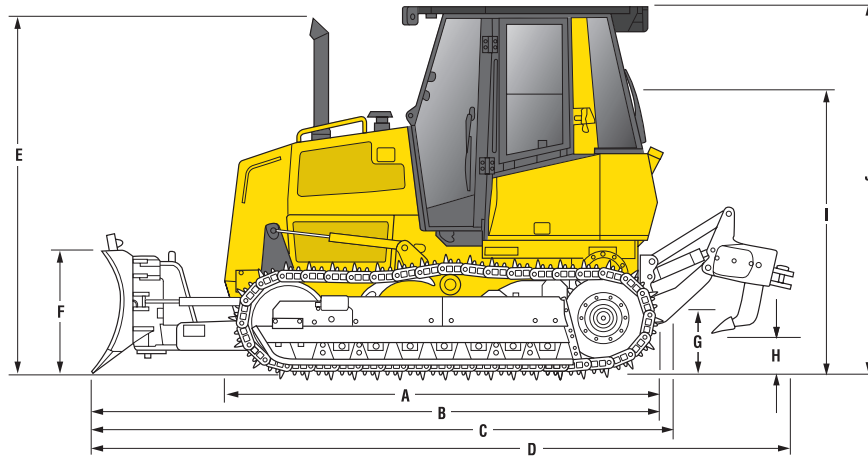


An industry-leading SAE maintainability index means that a crawler dozer from New Holland takes less time and effort to service than other models on the market.



D85B D95B Specifications

DIMENSIONS



	D85B		D95B	
A. Overall length, no blade, no rear equip., SALT chain, in (mm)	124.1	(3153)	128.5	(3263)
B. Overall length, blade straight, no rear equip., in (mm)	164.2	(4171)	167.6	(4258)
C. Overall length, blade straight, w/drawbar, in (mm)	170.2	(4322)	173.5	(4408)
D. Overall length, blade straight, w/ripper, in (mm)	202.6	(5147)	206.0	(5233)
E. Top of exhaust stack, in (mm)	103.3	(2624)	102.9	(2614)
F. Blade height, in (mm)	36	(914)	36	(914)
G. Ground clearance at belly pans, in (mm)	14.4	(366)	14.5	(369)
H. Shank height (transport position), in (mm)	17.3	(450)	17.3	(450)
I. Top of seat headrest, in (mm)	87.8	(2229)	87.8	(2229)
J¹. Height of cab w/o air conditioning, in (mm)	109.2	(2773)	109.2	(2773)
J². Height of cab w/ air conditioning, in (mm)	109.8	(2788)	109.8	(2788)
J³. ROPS height, in (mm)	109.2	(2773)	109.2	(2773)

Note: Overall length is with blade pitch at 55° (factory setting). If blade pitch is adjusted to 60° length will decrease 15 mm (0.6 inches).

Note: Ground clearance and overall height dimensions are with the grouser fully penetrated per SAEJ1234. Add 52.5 mm (2.06 inches) if unit is on solid surface.

*Dimensions are with drawbar in "high-ride" position. If drawbar is flipped to "low-ride" position ground clearance is 374 mm (14.7 inches) and centerline of drawbar opening is 430 mm (16.9 inches).

TRANSPORT WIDTH	D85B		D95B	
Width w/ blade at max angle, ft/in (mm)	LT	8' 0" (2446)	LT	8' 6" (2585)
	WT	8' 6" (2585)	WT	9' 6" (2907)
	LGP	9' 6" (2907)	LGP	10' 0" (3043)

OPERATING WEIGHT	D85B		D95B	
Operating Weight, lbs (kg)	LT	18,895 (8569)	LT	19,629 (8902)
	WT	19,700 (8936)	WT	20,200 (9163)
	LGP	20,191 (9163)	LGP	20,724 (9399)

ENGINE	D85B		D95B	
Make and model	FPT 445TA/E66		FPT 445TA/E66	
Gross power @ RPM, hp (kW)	90 (67) @ 2000		99 (74) @ 2200	
Net Power @ RPM, hp (kW)	85 (63) @ 2000		96 (72) @ 2200	
Peak torque (gross), lb-ft (N-m) @ RPM	295 (400) @ 1400		295 (400) @ 1400	
Number of cylinders	4		4	
Displacement, cu in (l)	275 (4.5)		275 (4.5)	
Bore x stroke, in (mm)	4.09 X 5.20 (104 X 132)		4.09 X 5.20 (104 X 132)	
Cooling type	Water		Water	

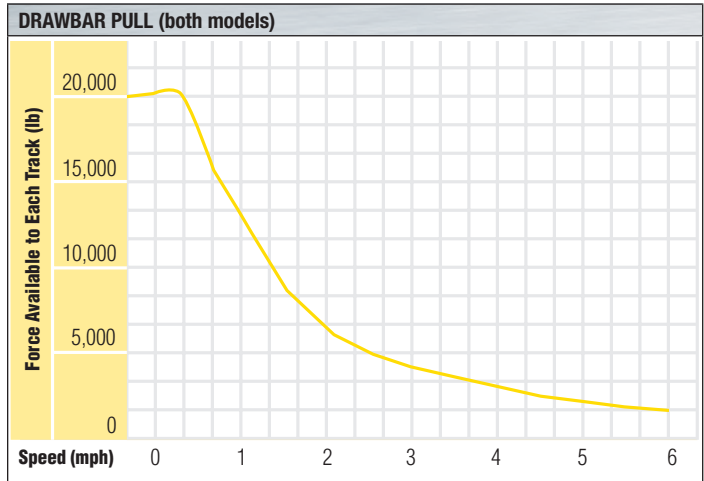
D85B D95B Specifications

TRANSMISSION (both models)	
Transmission type	Hydrostatic
Travel speed	Infinitely Variable between 0 to 5.5 mph (9.7 km/h)
No. of speeds.....	10
Drawbar pull at stall, lbf (N).....	39,786 (176,976)
Steering system type.....	Dual-path hydrostatic
Final drive type	Triple reduction w/ planetary
Parking brake type	SAHR (spring applied, hydraulically released)

HYDRAULIC SYSTEM (both models)	
Main pump type.....	Gear
Total flow, gpm (l/min)	20.3 (76.8)

RIPPER (both models)	
Type Parallelogram	
Ripping depth, in (mm)	14.3 (363)
Shank holders.....	5
Shanks included	3
Weight (with three shanks), lb (kg).....	1,400 (635)

ELECTRICAL (both models)	
System.....	12 volt, negative ground
Battery	One 650 CCA (160 Ah) standard, two optional
Alternator.....	65 amp (ROPS), 95 amp (Cab)



BLADE			
	D85B Track Configuration		
	LT	WT	LGP
Blade type	6-way (PAT)	6-way (PAT)	6-way (PAT)
Blade capacity, cu yd (m³)	2.16 (1.65)	2.32 (1.77)	2.60 (1.99)
Blade width, in (mm)	104 (2640)	110 (2790)	124 (3150)
Blade height, in (mm)	36 (910)	36 (910)	36 (910)
Blade depth below ground, in (mm)	19 (483)	19 (483)	19 (483)
Blade lift above ground, in (mm)	34.4 (874)	34.4 (874)	34.4 (874)
Blade angle, L/R each direction, degrees	25/25	25/25	25/25
Blade tilt, in (mm)	15 (380)	15.9 (404)	17.9 (455)
Blade pitch	55 deg. (opt. adj. 52-60)	55 deg. (opt. adj. 52-60)	55 deg. (opt. adj. 52-60)
	D95B Track Configuration		
	LT	WT	LGP
Blade type	6-way (PAT)	6-way (PAT)	6-way (PAT)
Blade capacity, cu yd (m³)	2.16 (1.65)	2.52 (1.93)	2.73 (2.09)
Blade width, in (mm)	104 (2490)	120 (3050)	130 (3300)
Blade height, in (mm)	36 (910)	36 (910)	36 (910)
Blade depth below ground, in (mm)	19 (483)	19 (483)	19 (483)
Blade lift above ground, in (mm)	34.4 (874)	34.4 (874)	34.4 (874)
Blade angle, L/R each direction, degrees	25/25	25/25	25/25
Blade tilt, in (mm)	15 (381)	17.3 (439)	18.8 (478)
Blade pitch	55 deg. (opt. adj. 52-60)	55 deg. (opt. adj. 52-60)	55 deg. (opt. adj. 52-60)

D85B D95B Specifications

UNDERCARRIAGE			
	D85B Track Configuration		
	LT	WT	LGP
Shoe width, in (mm)	18 (460)	24 (610)	28 (710)
No. of shoes	39	39	39
No. of upper rollers	1	1	1
No. of bottom rollers	6	6	6
Link pitch, in (mm)	6.73 (171)	6.73 (171)	6.73 (171)
Sealed and lubed track	Standard	Standard	Standard
Length of track on ground, in (mm)	89 (2266)	89 (2266)	89 (2266)
Track gauge, in (mm)	62 (1575)	62 (1575)	62 (1575)
Track rollers (per track)	6	6	6
Carrier rollers (per track)	1	1	1
Shoe grouser height, in (mm)	2.06 (52.3)	2.06 (52.3)	2.06 (52.3)
Ground pressure, psi (kpa)	5.88 (40.54)	4.61 (31.78)	4.04 (27.85)
	D95B Track Configuration		
	LT	WT	LGP
Shoe width, in (mm)	18 (460)	24 (610)	28 (710)
No. of shoes	40	40	40
No. of upper rollers	1	1	1
No. of bottom rollers	7	7	7
Link pitch, in (mm)	6.7 (171)	6.7 (171)	6.7 (171)
Sealed and lubed track	Standard	Standard	Standard
Length of track on ground, in (mm)	92.6 (2352)	92.6 (2352)	92.6 (2352)
Track gauge, in (mm)	62 (1575)	70 (1778)	70 (1778)
Track rollers (per track)	7	7	7
Carrier rollers (per track)	1	1	1
Shoe grouser height, in (mm)	2.06 (52.3)	2.06 (52.3)	2.06 (52.3)
Ground pressure, psi (kpa)	5.82 (40.13)	4.54 (31.30)	4.00 (27.58)
SERVICE CAPACITIES		D85B	D95B
Crankcase with filter, qt (l)		13.0 (12.3)	13.0 (12.3)
Crankcase w/o filter, qt (l)		12.2 (11.5)	12.2 (11.5)
Coolant, gal (l)		6 (22.5)	6 (22.5)
Fuel Tank, gal (l)		50 (189.3)	50 (189.3)
Transmission & hydraulic oil		20.0 (75.7)	20.0 (75.7)
Final drive (each), qt (l)		15 (14.2)	15 (14.2)
Track roller (each), qt (l)		0.26 (0.25)	0.26 (0.25)
Front idler (each), qt (l)		0.52 (0.49)	0.52 (0.49)
Carrier roller (each), qt (l)		0.25 (0.24)	0.25 (0.24)
SALT tracks (each pin), oz (ml)		0.8 (23.7)	0.8 (23.7)

D85B D95B Base & Optional Equipment

STANDARD EQUIPMENT

DIESEL ENGINE (Tier III)

FPT 445TA/E66
 4 cyl diesel engine
 84 HP Net @ 2000 rpm (D85B)
 96 HP Net @ 2000 rpm (D95B)
 Air cleaner: dry type, 2 stage radial seal
 Turbine-style precleaner
 Anti-freeze solution to -34° F
 Fan, pusher
 Fuel tank: 50 gal. (US)
 Hand throttle
 Radiator: anti-sandblast

HYDRAULICS

Open center hydraulic system
 Three spool control valve
 Low effort T-handle-style blade control

TRANSMISSION

Dual-path infinitely variable hydrostatic transmission
 (0 to 6 mph)
 Decelerator pedal with automatic transmission speed retardation
 Center brake pedal - modulates transmission retardation and applies parking brake
 Hydrostatic braking
 Final drives - Triple reduction, two helical & one planetary gear reduction
 Single lever transmission control with infinitely variable control of speed by fore/aft movement of the lever
 Fwd./rev. speed is maintained by an adjustable hold capability
 Steering is accomplished by moving the joystick left or right and is proportionate to the amount of lever movement
 Counter-rotation can be obtained with full travel of the joystick either right or left
 Reverse speed ratio control - four point position switch adjusts reverse speeds as percentage of forward speed (80/100/115/130 percent)

ELECTRICAL

65 amp alternator
 12-volt system
 Back-up alarm
 Master disconnect switch
 Fuse circuit protection
 Four front lights & two rear lights
 Two auxiliary 12V power ports

OPERATOR STATION

ROPS canopy
 Park brake - spring applied hydraulic released
 Horn
 Lockout levers: neutralizes transmission, applies parking brake
 Adjustable armrests
 High and low foot rests
 Lunch box area
 Operator manual storage
 Suspension seat with 2 in. seat belt
 Mirror
 Floor mat
 Headliner
 Decelerator pedal

INSTRUMENTS

Gauges:
 Tachometer (digital)
 Hourmeter (digital)
 Diagnostic service reminder (digital)
 Engine coolant temperature
 Transmission oil temperature
 Transmission speed indicator
 Voltmeter
 Warning lights:
 Air filter restriction
 Battery charge
 Diagnostic fault indicator
 Engine oil pressure
 Engine coolant temperature
 Fuel level
 Hydraulic oil filter restriction
 Parking brake
 Service
 Transmission charge pressure
 Transmission temperature
 Warning (audible) indicators:
 Engine coolant temperature
 Engine oil pressure
 Low fuel level
 Transmission charge pressure

UNDERCARRIAGE

Guards - track guiding, front and rear
 Hydraulic track adjusters
 Sealed and Lubricated Track (SALT) with master link
 Track adjuster guard
 Track and carrier rollers permanently lubricated
 Heavy duty track covers
 89 in (226 cm) track on ground (D85B)
 93 in (236 cm) track on ground (D95B)

LONG TRACK (LT)

62 in (157 cm) gauge track
 18 in (46 cm) grouser shoes
 Blade: 2.16 cu yd (1.65 m³), 104 in (249 cm) width (D85B)
 Blade: 2.32 cu yd (1.77 m³), 104 in (249 cm) width (D95B)

WIDE TRACK (WT)

70 in (171 cm) gauge track
 24 in (61 cm) grouser shoes
 Blade: 2.32 cu yd (1.77 m³), 110 in (279 cm) width (D85B)
 Blade: 2.62 cu yd (1.93 m³), 120 in (305 cm) width (D95B)

LOW GROUND PRESSURE (LGP)

70 in (170 cm) gauge track
 28 in (71 cm) grouser shoes
 Blade: 2.60 cu yd (1.99 m³), 124 in (315 cm) width (D85B)
 Blade: 2.73 cu yd (2.09 m³), 130 in (330 cm) width (D95 B)

WARRANTY

New Holland Construction standard warranty applies

FREIGHT

FOB Calhoun, Georgia

OPTIONAL EQUIPMENT

OPERATOR STATION

Cab with heater and air conditioning
 3 in. seatbelt
 Seat, deluxe, vinyl air suspension (ROPS only)
 Seat, deluxe, cloth air suspension (ROPS only)

ENGINE

Cold start aid - grid heater (includes dual batteries)

HYDRAULICS

Hydraulic pump with PTO
 Hydraulic valve, 4 spool (in lieu of 3 spool for field-installed rippers only. Included with factory installed rippers)

UNDERCARRIAGE

Grouser shoes 18 in – 28 in
 Advanced track-life track (all shoes)
 Center rock guards

SERVICE

Tool box
 Environmental drains (includes valve and drain hose and coolant, fuel, and hydraulic reservoirs)
 Radiator brush

SAFETY

Rear screen
 Rear wiper (cabs only)
 Side forestry screens for ROPS (requires brush guard and ROPS rear screen)
 Brush guards

ATTACHMENTS & ACCESSORIES

Multiple blade widths (104 in – 130 in)
 Three-shank ripper
 Variable pitch link for blade
 Front counterweight and pull hook
 Drawbar

CRAWLER DOZERS

D85B

Horsepower
Net 85 hp (63 kW) @ 2,000 rpm

Operating Weight
LT: 18,895 lbs (8569kg)
WT: 19,700 lbs (8936 kg)
LGP: 20,191 lbs (9163 kg)

Blade Capacity
LT: 2.16 cu yd (1.65 m³)
WT: 2.32 cu yd (1.77 m³)
LGP: 2.6 cu yd (1.99 m³)

D95B

Horsepower
Net 96 hp (72 kW) @ 2,200 rpm

Operating Weight
LT: 19,629 lbs (8902 kg)
WT: 20,200 lbs (9163 kg)
LGP: 20,724 lbs (9399 kg)

Blade Capacity
LT: 2.16 cu yd (1.65 m³)
WT: 2.52 cu yd (1.93 m³)
LGP: 2.73 cu yd (2.09 m³)

World Class Products Demand World Class Dealers

The purchase of a New Holland Construction machine is just the beginning of our relationship together. Consider your experienced New Holland Construction Equipment dealer as your local partner in productivity. Assistance in selecting the right model for your operation and developing an affordable leasing or financing plan through CNH Capital are just a few advantages your local dealer can provide.

Your New Holland Construction dealer's full service capabilities bring you responsive support with genuine New Holland parts and all makes coverage. More importantly, we are there wherever and whenever you need us with our fully equipped service vehicles. From customized maintenance programs to professional operator and technical training, our factory-trained service and parts experts are there to assist you with any of your equipment support needs.

Your business deserves nothing less than world class product, supported by a world class business partner. That's your New Holland Construction Equipment dealer—your partner in productivity.



New Holland Construction Equipment is backed with a **1-Year/Unlimited Hour Standard Warranty**.

Use our dealer locator at www.newholland.com to find the dealer nearest you.



New Holland Construction
245 E. North Avenue
Carol Stream, IL 60188-2021
866-726-3396 Toll Free
630-260-4000
630-260-4304 Fax

FIAT
GROUP

Design, materials and/or specifications are subject to change without notice and without liability therefor. Specifications are applicable to units sold in Canada, the United States, its territories and possessions, and may vary outside these areas.

© 2008 CNH America LLC. All rights reserved. New Holland is a trademark of CNH America LLC. Any trademarks referred to herein, in association with goods and/or services of companies other than CNH America LLC, are the property of those respective companies.



Safety begins with a thorough understanding of the equipment. Always make sure you and your operators read the Operator's Manual before using the equipment. Pay close attention to all safety and operating decals and never operate machinery without all shields, protective devices and structures in place.

STOCK #NHC7020804 • 110803.5 • MG • PRINTED IN U.S.A.

www.newholland.com

