



NEW HOLLAND

MID-SIZE EXCAVATORS



E70 E80

 **NEW HOLLAND**

www.newhollandconstruction.com

DIGGING POWER THAT FITS WHERE OTHER MACHINES CAN'T

Improve your on-the-job efficiency with a New Holland mid-size excavator. The E70 and E80 maximize your productivity by combining extra power with outstanding maneuverability and control.

E70 Zero-tail-swing mid-size

- The standard counterweight of the E70 never extends beyond the tracks
- 360-degree “worry-free” zone—operators can concentrate on the task at hand
- Less chance of causing damage, reducing repair costs
- A 6'9" (2.07 m) arm is standard

E70 with offset boom option

- Can dig outside tracks next to buildings, fences and other structures
- Parallel linkage ensures that digging is in a line parallel with the operator's seat
- Offset range to the left is 3'5" (1.04 m) and 4'4" (1.33 m) to the right
- Precise bucket control keeps trench walls perfectly vertical

E80 Short-radius mid-size with center swing

- Short tail swing—the counterweight extends only inches over the edge of the tracks
- Minimal front tail swing
- Can work close to walls or foundations
- A 6'9" (2.07 m) arm is standard and a 5'11" (1.8 m) arm is optional
- Reliable Isuzu engine with the fuel efficiency of direct fuel injection

These mid-size excavators work efficiently even in the most challenging conditions and work spaces. See one at your New Holland dealer.

	Net HP (kW) @ 2100 rpm	Weight, lbs (kg)	Max Dig Depth, ft (m)
E70	54 (40.4)	16,400 (7450)	14'9" (4.52)
E80	54 (40.4)	17,600 (7980)	15'3" (4.65)



“No worries” zero tail swing

The E70 works where other machines can't. The E70 standard counterweight never extends beyond the tracks, so you can work at maximum efficiency, knowing that the tail end of the machine will not extend into traffic—or into walls or fences.





Operators appreciate the quiet comfort and the outstanding visibility of the New Holland cab.

Optional 17.7-inch (450 mm) rubber tracks reduce work-site noise and damage to asphalt, concrete, or turf. Standard equipment includes 23.6-inch (600 mm) semi-triple grouser shoes.

Standard, full-width dozer blade is handy for backfilling and site grading.



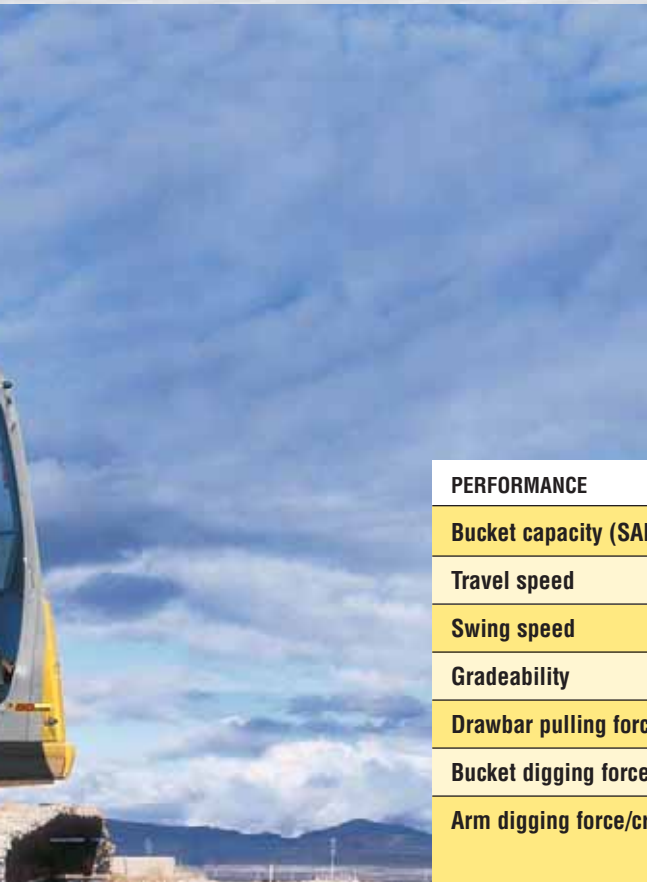
The E80 center boom swings to right or left, providing added flexibility when placing the bucket or attachment.





Two-speed travel

A full hydrostatic drive system provides smooth control, with push-button changes between low and high speeds. Choose the fast 3.4-mph travel speed or the lower speed that offers higher torque for dozing. The straight propel system assures straight-line travel when operating attachments.



AUTOMATIC ENGINE AND HYDRAULIC RESPONSE

These state-of-the-art excavators maximize your productivity with outstanding power and smooth, responsive hydraulic control.

Reliable power

- Isuzu four-cylinder diesel engine
- 54 SAE net horsepower (40.4 kW) @ 2,100 rpm
- 169 cubic inch (2.77 liter) displacement
- Direct fuel injection for excellent power and fuel economy

Automatic engine and hydraulic control

- Sophisticated system uses feedback from engine speed and hydraulic pressure sensors to adjust engine and hydraulic response to maximize productivity
- Automatic engine deceleration
- High horsepower on demand

High-performance hydraulics

- Two variable-displacement piston pumps mount directly to the engine without gear boxes
- A dedicated pump for the dozer blade lets you adjust the blade while pushing without affecting travel performance

Precise boom control

- Precise swing stops due to shock-less swing valve
- Boom and arm confluent circuits allow two-pump flow when needed for increased speed and productivity
- Variable swing priority provides smooth control during simultaneous operation of boom, arm, bucket, and swing
- Anti-drift valves hold heavy objects in a stationary position

Rugged undercarriage

- Idlers, lower roller, and carrier rollers are lubricated for life
- True two-speed hydraulic axial piston travel motors
- Spring-applied, hydraulically released parking brakes

PERFORMANCE	E70	E80
Bucket capacity (SAE heaped)	0.23–0.53 yd ³ (0.18–0.40 m ³)	0.23–0.53 yd ³ (0.18–0.40 m ³)
Travel speed	3.4/2.1 mph (5.3/3.4 km/h)	3.1/2.0 mph (5.0/3.2 km/h)
Swing speed	12.5 rpm	12.5 rpm
Gradeability	35° (70%)	35° (70%)
Drawbar pulling force	15,500 lbf (68.9 kN)	15,421 lbf (68.6 kN)
Bucket digging force	11,903 lbs (52.9 kN)	11,903 lbs (52.9 kN)
Arm digging force/crowding power	7,718 lbf (34.3 kN) – 6'9" arm	7,718 lbf (34.3 kN) – 6'9" arm 8,320 lbf (37 kN) – 5'11" arm



The air-suspension seat adjusts seven ways and includes a dual sliding mechanism that adjusts the seat in relation to the controls.



Standard-climate control system with heat and air conditioning maintains comfortable cab temperatures.



The front window slides up and out of the way. The lower windshield can be easily removed.

SMOOTH OPERATION, EASY MAINTENANCE

Operators remain comfortable and productive even after long hours thanks to the outstanding visibility and smooth operation of the E70 and E80 excavators.

Comfort and visibility

- Tinted glass and sunroof provide all-around visibility
- Suspension seat adjusts seven ways for maximum comfort
- Work lights and interior cab light brighten your work area
- Silicon-filled cab mounts reduce noise and vibration

Easy control

- Two pilot-operated wrist controls and foot pedals give you command of the boom, arm, bucket, and swing
- An electrical self-diagnostic function checks up to 36 different items to keep you informed

Information on display

- Work-mode status lamp displays Heavy Work, Standard, or Fine Control mode
- Fuel level and water temperature gauges
- Hourmeter
- Lamps or indicators for engine oil pressure, engine coolant temperature, battery charge, air cleaner restriction, engine preheat status, two-speed travel, and swing release





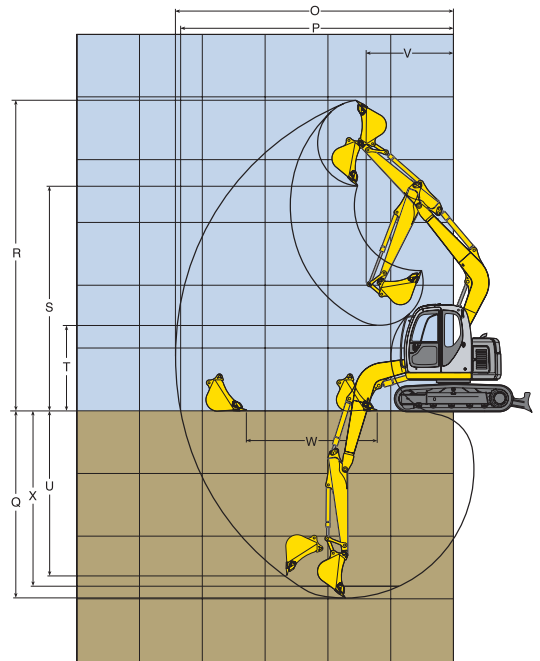
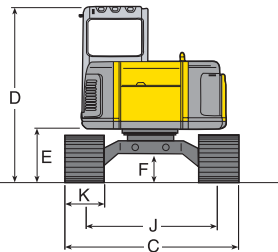
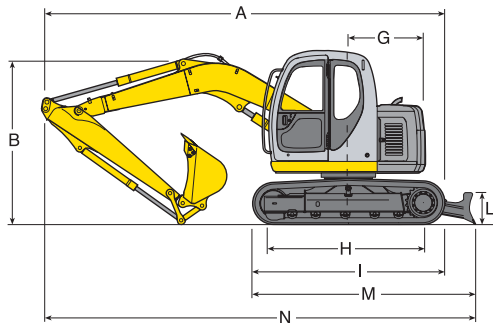
Easy to maintain

A swing-open engine hood provides complete access for routine maintenance checks, making it easy to check fluid levels and replace filters. The radiator screen and coolers are easy to reach and clean. Fuel and hydraulic tanks are protected with a durable shield that unlocks with the ignition key.



E70 Specifications

DIMENSIONS AND WORKING RANGES



DIMENSIONS

ARM LENGTH

A. Overall length	6'9" (2.07 m)
B. Overall height (to top of boom)*	19'0" (5.79 m)
C. Overall width	8'6" (2.60 m)
D. Overall height (to top of cab)*	8'1" (2.47 m)
E. Ground clearance of rear end*	8'6" (2.60 m)
F. Ground clearance*	2'5" (0.75 m)
G. Tail swing radius	15" (0.38 m)
H. Tumbler distance	3'10" (1.16 m)
I. Overall length of crawler	7'4" (2.24 m)
J. Track gauge	9'5" (2.86 m)
K. Shoe width	6'2" (1.87 m)
L. Height of blade	2' (0.60 m)
M. Length of lower w/blade	1'2" (0.36 m)
N. Transport length	10'10" (3.30 m)
	20'5" (6.22 m)

*Excludes height of grouser bar

WORKING RANGES

ARM LENGTH

	Standard Arm**
O. Max digging reach	6'9" (2.07 m)
P. Max digging reach at ground level	22'0" (6.71 m)
Q. Max digging depth*	21'7" (6.57 m)
R. Max digging height*	14'9" (4.52 m)
S. Max dumping clearance*	24'7" (7.50 m)
T. Min dumping clearance*	17'9" (5.43 m)
U. Max vertical wall digging depth*	6'9" (2.07 m)
V. Min front swing radius	13'0" (3.97 m)
W. Horizontal digging stroke at ground level	6'10" (2.09 m)
X. Digging depth for 8' (2.4 m) flat bottom	10'4" (3.15 m)
	13'10" (4.22 m)

**Measurements shown are for machines equipped with the 0.29 cu. yd. (0.22 m³) bucket

GENERAL

Operating weight with bucket, lbs (kg)	16,400 (7,450)
Bucket capacity range, SAE heaped, cu. yd. (m ³)	0.23–0.53 (0.18–0.40)
Arm length, ft. in. (m)	5'11" (1.8)

ENGINE

Manufacturer & model	ISUZU, A-4JB1
Type	4 cylinder, direct-injection, diesel
Power output @ rpm, SAE Net hp (kW)	54 (40.4) @ 2,100
Displacement, in ³ (l)	169 (2.77)
Fuel tank capacity, gal (l)	22.5 (85)
Electrical system, volts	24V A.C. 30 amp alternator

HYDRAULIC SYSTEM

Pumps, Number & type	2VP + 1FG + 1FG
Rated oil flow, gpm (L/min)	2 x 17.4 + 12.8 + 5.3 (2 x 66 + 48.5 + 20)
Main relief pressure, psi (MPa)	4,250 (29.4)
Discharge pressure, boom/arm/bucket, psi (MPa)	4,270 (30.0)
Capacity of hydraulic system, gal (l)	24 (95)
Capacity of hydraulic reservoir, gal (l)	14.5 (55)

BREAKOUT FORCES

Arm breakout force SAE, lb (kg)	7,718 (3,500) with standard 6'9" (2.07 m) arm
	8,630 (3,900) with offset boom option
Bucket breakout force SAE, lb (kg)	11,903 (5,400)
Bucket breakout force ISO, lbf (kN)	13,226 (58.8)

DOZER BLADE

Width x height, in (mm)	7'7" (2,320) x 1'2" (360)
Max blade lift above ground, in (mm)	14" (355.6)
Max blade drop below ground, in (mm)	9" (228.6)

UNDERCARRIAGE

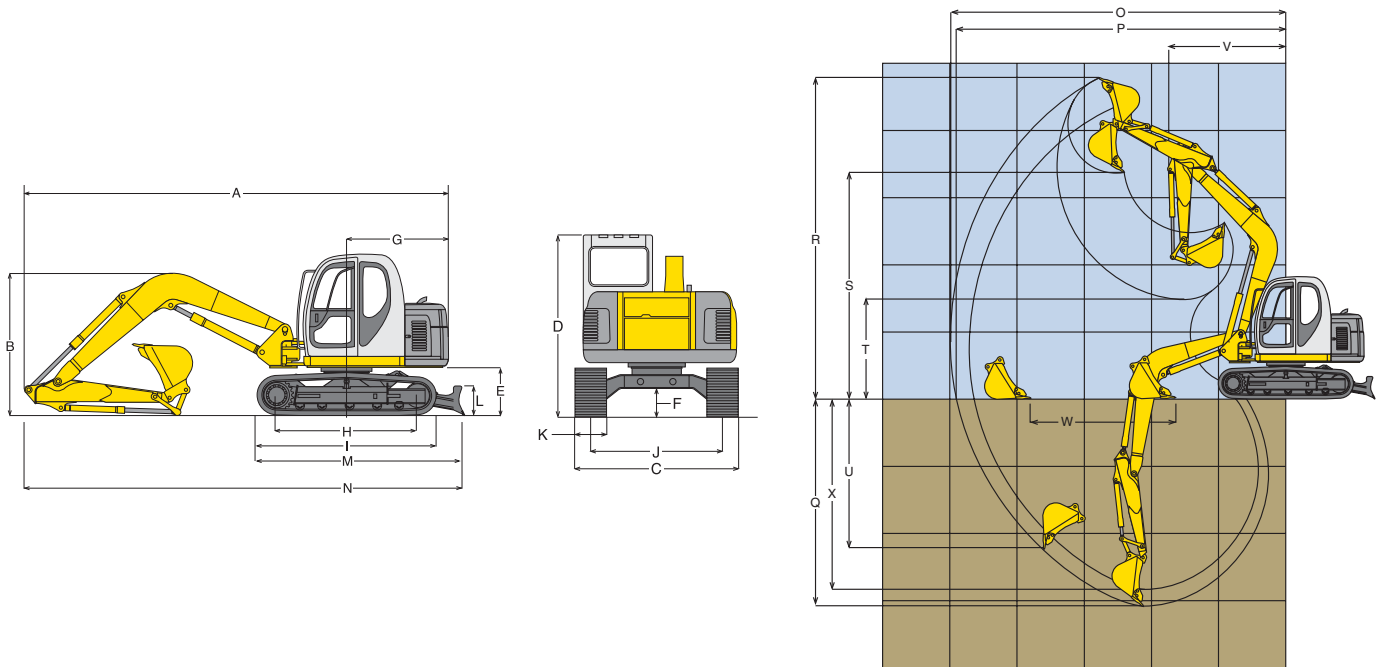
Travel speed, fwd., mph (km/h)	3.4/2.1 (5.3/3.4)
Drawbar pull, lbf (kN)	15,500 (68.9)
Crawler shoe width, in (mm)	23.6 (600)
Ground pressure, psi (kPa)	3.4 (24)
Gradeability, degrees (%)	35 (70)

SWING

Swing speed, rpm	12.5
Swing torque, ft-lb (kNm)	14,060 (20.4)

E80 Specifications

DIMENSIONS AND WORKING RANGES



DIMENSIONS

ARM LENGTH

A. Overall length	22'2" (6.76 m)
B. Overall height (to top of boom)*	7'10" (2.38 m)
C. Overall width	8'2" (2.49 m)
D. Overall height (to top of cab)*	8'6" (2.60 m)
E. Ground clearance of rear end*	2'6" (0.77 m)
F. Ground clearance*	1'4" (0.41 m)
G. Tail swing radius	5'5" (1.65 m)
H. Tumbler distance	7'4" (2.24 m)
I. Overall length of crawler	9'5" (2.86 m)
J. Track gauge	6'2" (1.87 m)
K. Shoe width	1'11.6" (0.60 m)
L. Height of blade	1'2" (0.36 m)
M. Length of lower w/blade	10'11" (3.32 m)
N. Transport length	21'6" (6.56 m)

*Excludes height of grouser bar

WORKING RANGES

ARM LENGTH

O. Max digging reach	24'11" (7.49 m)
P. Max digging reach at ground level	24'5" (7.44 m)
Q. Max digging depth*	15'3" (4.66 m)
R. Max digging height*	24'1" (7.33 m)
S. Max dumping clearance*	17'3" (5.27 m)
T. Min dumping clearance*	6'6" (1.98 m)
U. Max vertical wall digging depth*	12'9" (3.89 m)
V. Min front swing radius	10'3" (3.12 m)
W. Horizontal digging stroke at ground level	—
X. Digging depth for 8' (2.4 m) flat bottom	14'3" (4.34 m)

**Measurements shown are for machines equipped with the 0.29 cu. yd. (0.22 m³) bucket

***Measurements shown are for machines equipped with the 0.37 cu. yd. (0.28 m³) bucket

Standard Arm**

6'9" (2.07 m)
24'11" (7.49 m)
24'5" (7.44 m)
15'3" (4.66 m)
24'1" (7.33 m)
17'3" (5.27 m)
6'6" (1.98 m)
12'9" (3.89 m)
10'3" (3.12 m)
—
14'3" (4.34 m)

Optional Arm***

5'11" (1.80 m)
23'6" (7.17 m)
23'0" (7.01 m)
14'4" (4.38 m)
22'3" (6.79 m)
15'8" (4.78 m)
6'11" (2.11 m)
10'5" (3.17 m)
8'3" (2.52 m)
10'1" (3.08 m)
13'0" (3.95 m)

GENERAL

Operating weight with bucket, lbs (kg)	17,600 (7,980)
Bucket capacity range, SAE heaped, cu. yd. (m ³)	0.23–0.53 (0.18–0.40)
Arm length, ft. in. (m)	6'9" (2.07)

ENGINE

Manufacturer & model	ISUZU, A-4JB1
Type	4 cylinder, direct-injection, diesel
Power output @ rpm, SAE Net hp (kW)	54 (40.4) @ 2,100
Displacement, in ³ (l)	169 (2.77)
Fuel tank capacity, gal (l)	26 (100)
Electrical system, volts	24V A.C. 30 amp alternator

HYDRAULIC SYSTEM

Hydraulic pumps, Number & type	2VP + 1FG + 1FG
Rated oil flow, gpm (L/min)	2 x 17.4 + 12.8 + 5.3 (2 x 66 + 48.5 + 20)
Main relief pressure, psi (MPa)	4,250 (29.4)
Discharge pressure, boom/arm/bucket, psi (MPa)	4,270 (30.0)
Capacity of hydraulic system, gal (l)	31 (117)
Capacity of hydraulic reservoir, gal (l)	14.5 (55)

BREAKOUT FORCES

Arm breakout force SAE, lb (kg)	7,718 (3,500) with standard 6'9" (2.07 m) arm
	8,320 (3,773) with optional 5'11" (1.8 m) arm
Bucket breakout force SAE, lb (kg)	11,903 (5,400)
Bucket breakout force ISO, lbf (kN)	13,226 (58.8)

DOZER BLADE

Width x height, in (mm)	77" (2,320) x 1'2" (360)
Max blade lift above ground, in (mm)	14" (355.6)
Max blade drop below ground, in (mm)	9" (228.6)

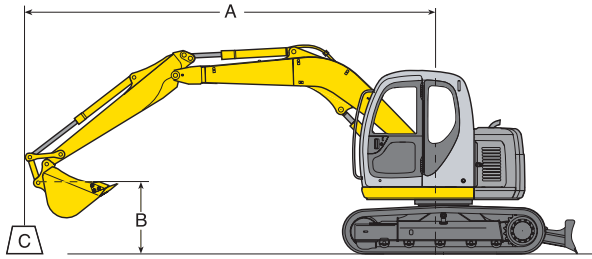
UNDERCARRIAGE

Travel speed, fwd., mph (km/h)	3.1/2.0 (5.0/3.2)
Drawbar pull, lbf (kN)	15,421 (68.6)
Crawler shoe width, in (mm)	23.6 (600)
Ground pressure, psi (kPa)	3.85 (26.5)
Gradeability, degrees (%)	35 (70)

SWING

Swing speed, rpm	12.5
Swing torque, ft-lb (kNm)	14,060 (20.4)

E70 and E80 Lifting Capacities



E70 LIFTING CAPACITY Standard Arm: 6'9" (2.07 m) Bucket: 0.29 yd³ (0.22 m³) 419 lbs (190 kg)

B	C	A 5' (1.5 m)		A 10' (3.0 m)		A 15' (4.6 m)	
		Rating over front	Rating over side/360 degrees	Rating over front	Rating over side/360 degrees	Rating over front	Rating over side/360 degrees
20' (6.1 m)	lb kg			*3,400 *1,500	*3,400 *1,500		
15' (4.6 m)	lb kg					*3,100 *1,400	2,700 1,200
10' (3.0 m)	lb kg			*4,900 *2,200	*4,900 *2,200	*4,000 *1,800	2,700 1,200
5' (1.5 m)	lb kg			*6,700 *3,000	4,800 2,200	*4,600 *2,100	2,500 1,100
Ground level	lb kg			*7,700 *3,500	4,300 1,900	*4,900 *2,200	2,300 1,000
-5' (-1.5 m)	lb kg	*8,000 *3,600	*8,000 *3,600	*7,200 *3,200	4,200 1,900	*4,500 *2,000	2,200 1,000
-10' (-3.0 m)	lb kg	*7,700 *3,500	*7,700 *3,500	*4,800 *2,100	4,300 1,900		



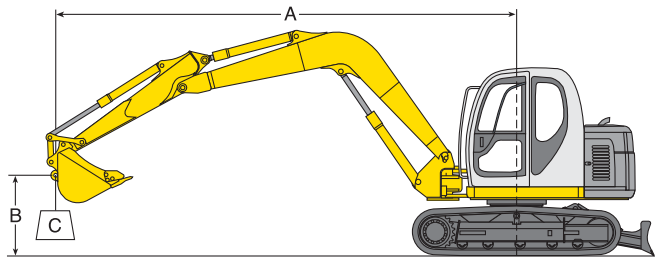
Rating over front



Rating over side/360 degrees

- A Reach swing centerline to bucket hook
- B Bucket hook height above/below ground
- C Lifting capacities in pounds and kilograms
 - Max discharge pressure: 4,270 psi (30.0 MPa)
 - Track shoe: 23.6" (600 mm) Triple grouser steel shoe
 - Boom: 12'2" (3.72 m) swing boom
 - Dozer blade down

1. Do not attempt to lift or hold any load that is greater than these rated values at their specified load radius and height. Weight of all accessories must be deducted from the above lifting capacities.
2. Lifting capacities are based on machine standing on level, firm, and uniform ground.
3. User must make allowance for job conditions such as soft or uneven ground, out of level conditions, experience of personnel, etc.
4. Ratings at bucket lift hook.
5. The above rated loads are in compliance with SAE Hydraulic Excavator Lift Capacity Rating Standard J 1097. They do not exceed 87% of hydraulic lifting capacity or 75% of tipping load.
6. Rated loads marked with an asterisk (*) are limited by hydraulic capacity rather than tipping load.
7. Operator should be fully acquainted with the Operator's and Maintenance Instructions before operating this machine and rules for safe operation of equipment should be adhered to at all times.
8. Capacities apply to only machine as originally manufactured and normally equipped by NEW HOLLAND.



E80 LIFTING CAPACITY Standard Arm: 5'11" (1.80 m) Bucket: 0.37 yd³ (0.28 m³) 440 lbs (200 kg)

B	C	A 5' (1.5 m)		A 10' (3.0 m)		A 15' (4.6 m)		A 20' (6.1 m)	
		Rating over front	Rating over side/360 degrees	Rating over front	Rating over side/360 degrees	Rating over front	Rating over side/360 degrees	Rating over front	Rating over side/360 degrees
15' (4.6 m)	lb kg					*3,600 *1,630	3,450 1,560		
10' (3.0 m)	lb kg					*4,260 *1,930	3,290 1,490		
5' (1.5 m)	lb kg			*10,010 *4,540	5,500 2,490	*5,420 *2,460	2,980 1,350	*3,880 *1,760	1,870 840
Ground level	lb kg			*9,170 *4,160	5,080 2,300	*6,150 *2,790	2,770 1,250		
-5' (-1.5 m)	lb kg	*7,750 *3,510	*7,750 *3,510	*9,740 *4,420	5,080 2,300	*5,830 *2,640	2,700 1,220		
-10' (-3.0 m)	lb kg			*6,420 *2,910	5,280 2,390				



Rating over front



Rating over side/360 degrees

- A Reach swing centerline to bucket hook
- B Bucket hook height above/below ground
- C Lifting capacities in pounds and kilograms
 - Max discharge pressure: 4,270 psi (30.0 MPa)
 - Track shoe: 23.6" (600 mm) Triple grouser steel shoe
 - Boom: 12'2" (3.72 m) swing boom
 - Dozer blade down

1. Do not attempt to lift or hold any load that is greater than these rated values at their specified load radius and height. Weight of all accessories must be deducted from the above lifting capacities.
2. Lifting capacities are based on machine standing on level, firm, and uniform ground.
3. User must make allowance for job conditions such as soft or uneven ground, out of level conditions, experience of personnel, etc.
4. Ratings at bucket lift hook.
5. The above rated loads are in compliance with SAE Hydraulic Excavator Lift Capacity Rating Standard J 1097. They do not exceed 87% of hydraulic lifting capacity or 75% of tipping load.
6. Rated loads marked with an asterisk (*) are limited by hydraulic capacity rather than tipping load.
7. Operator should be fully acquainted with the Operator's and Maintenance Instructions before operating this machine and rules for safe operation of equipment should be adhered to at all times.
8. Capacities apply to only machine as originally manufactured and normally equipped by NEW HOLLAND.

E80 LIFTING CAPACITY Optional Arm: 6'9" (2.07 m) Bucket: 0.29 yd³ (0.22 m³) 419 lbs (190 kg)

B	C	A 5' (1.5 m)		A 10' (3.0 m)		A 15' (4.6 m)		A 20' (6.1 m)	
		Rating over front	Rating over side/360 degrees	Rating over front	Rating over side/360 degrees	Rating over front	Rating over side/360 degrees	Rating over front	Rating over side/360 degrees
15' (4.6 m)	lb kg					*3,270 *1,480	*3,270 *1,480	*3,490 *1,580	1,960 880
10' (3.0 m)	lb kg					*3,950 *1,790	3,290 1,490	*3,870 *1,750	1,840 830
5' (1.5 m)	lb kg			*9,320 *4,220	5,570 2,530	*5,160 *2,340	2,980 1,350	*4,130 *1,870	1,740 790
Ground level	lb kg			*7,850 *3,560	5,040 2,280	*6,020 *2,730	2,730 1,240		
-5' (-1.5 m)	lb kg	*6,150 *2,790	*6,150 *2,790	*10,060 *4,560	4,980 2,260	*5,900 *2,670	2,640 1,190		
-10' (-3.0 m)	lb kg	*10,640 *4,820	*10,640 *4,820	*7,140 *3,230	5,150 2,330	*4,110 *1,860	2,730 1,230		

E70 and E80 Base and Optional Equipment

E70 BASE EQUIPMENT

Engine, ISUZU A-4JB1	Die formed, modular steel full-vision cab, rubber mounted, sound insulated, wind-shield wiper, adjustable reclining operator's seat with lap safety belt, heater and defroster, cigarette lighter, ashtray, floor mat, cab light, control lever lock, tinted skylight with damper cylinder.
Working mode selector (Fine control, Standard, Heavy work)	
Straight travel system	
Automatic shift, two-speed travel	
Travel alarm	
Automatic engine deceleration	
Lifetime lubricated track rollers, idlers and sprockets, grease cylinder track adjuster, track link disassembly mechanism, long pitch sealed and strutted track links	Multi-display monitor includes: system status, engine preheat status, low engine oil pressure warning, engine coolant temperature level warning, engine air cleaner restriction, battery charging system, low fuel level, CPU error indicator lamp, hour meter, fuel level and water temperature level gauges, two-speed travel and swing release indicators.
Heavy-duty batteries (2x12 volt-70 AH)	
24 to 12 volt converter	
Starting motor (24V/3.2 kW), 30 Amp alternator	
Automatic climate control	
Hydraulic oil cooler	Two lever control for boom, arm, bucket, and swing; pilot operated wrist controls and foot pedals
Audible warning system for: high coolant temperature, low engine oil pressure, clogged air filter and oil replacement interval	Boom and arm anti-drift valves Swing shockless valve
Automatic engine idle down for low oil pressure	23.6" (600 mm) Semi-triple grouser shoes
Electric horn	Swing boom: 12'2" (3.7 m)
Two front work lights	6'9" (2.1 m) arm
Hydraulic track adjusters	Dozer blade
Automatic swing and travel parking brakes	Control pattern changer (two-way ISO/BHL)
7-way adjustable air-suspension seat	

E70 OPTIONAL EQUIPMENT

Offset boom	One-way auxiliary hydraulics with piping and foot controls
Combined and one-way hydraulics (one or two pump) with piping and foot controls	17.7" (450 mm) rubber tracks

E80 BASE EQUIPMENT

Engine, Isuzu A-4JB1	One-way auxiliary hydraulics with piping and foot controls (one pump)
Working mode selector (Fine control, Standard, Heavy work)	Die formed, modular steel full-vision cab, rubber mounted, sound insulated, wind-shield wiper, adjustable reclining operator's seat with lap safety belt, heater and defroster, cigarette lighter, ashtray, floor mat, cab light, control lever lock, tinted skylight with damper cylinder.
Straight travel system	
Automatic shift, two-speed travel	Multi-display monitor includes: system status, engine preheat status, low engine oil pressure warning, engine coolant temperature level warning, engine air cleaner restriction, battery charging system, low fuel level, CPU error indicator lamp, hour meter, fuel level and water temperature level gauges, two-speed travel and swing release indicators.
Travel alarm	
Automatic engine deceleration	
Lifetime lubricated track rollers, idlers and sprockets, grease cylinder track adjuster, track link disassembly mechanism, long pitch sealed and strutted track links	
Heavy-duty batteries (2x12 volt-70 AH)	
24 to 12 volt converter	
Starting motor (24V/3.2 kW), 30 Amp alternator	
Automatic climate control	
Hydraulic oil cooler	Boom and arm anti-drift valves
Audible warning system for: high coolant temperature, low engine oil pressure, clogged air filter and oil replacement interval	Swing shockless valve Swing boom: 12'2" (3.7 m)
Automatic engine idle down for low oil pressure	6'9" (2.1 m) arm
Electric horn	Dozer blade
Two front work lights	Two lever control for boom, arm, bucket, and swing; pilot operated wrist controls and foot pedals
Hydraulic track adjusters	23.6" (600 mm) Semi-triple grouser shoes
Automatic swing and travel parking brakes	Control pattern changer (two-way ISO/BHL)
Combined one-way or two-way auxiliary hydraulics (one or two pump) with piping and foot controls	
7-way adjustable air-suspension seat	

E80 OPTIONAL EQUIPMENT

5'11" (1.8 m) arm
17.7" (450 mm) rubber tracks

E70 and E80 Bucket Selection

E70 AND E80 BUCKET SELECTION CHART

Bucket Duty	Capacity (SAE) Cubic Yard (m ³)	Width Inches (m)	Weight lb (kg)	Arm 6"≤(2.07 m)
General Purpose	0.23 (.175)	18 (.457)	337 (153)	H
	0.26 (.198)	20 (.508)	360 (163)	H
	0.33 (.252)	24 (.609)	400 (182)	H
	0.43 (.328)	30 (.762)	459 (209)	M
	0.53 (.405)	36 (.914)	537 (244)	L
Heavy Duty	0.23 (.175)	18 (.457)	454 (206)	H
	0.26 (.198)	20 (.508)	476 (216)	H
	0.33 (.252)	24 (.609)	527 (240)	M
	0.43 (.328)	30 (.762)	641 (291)	L
	0.53 (.405)	36 (.914)	737 (335)	X

H ... Used with material weight up to 3,000 lbs per cubic yard.

L ... Used with material weight up to 2,000 lbs per cubic yard.

M ... Used with material weight up to 2,500 lbs per cubic yard.

X ... Not recommended.

MID-SIZE EXCAVATORS

E70

Horsepower
54 hp (40.4 kW)

Operating weight
16,400 lbs (7450 kg)

Maximum dig depth
14 ft. 9 in. (4.52 m)

E80

Horsepower
54 hp (40.4 kW)

Operating weight
17,600 lbs (7980 kg)

Maximum dig depth
15 ft. 3 in. (4.65 m)



New Holland Construction Equipment Dealers are committed to your success

Your New Holland construction equipment dealer can match you with the best equipment for your operation. Your productivity is their goal and your profitability is their priority.

But providing dependable, efficient construction equipment is only the beginning. Your dealer can also make it easier to put New Holland construction equipment to work on your job site by tailoring low-rate financing, lease programs and insurance plans to meet your needs.

And after the sale your dealer provides peace of mind with expert parts and service support. Factory-trained technicians will service your equipment promptly and maintain your investment.

Visit your New Holland construction equipment dealer and see for yourself why New Holland is a rapidly growing force in the construction equipment industry.



Visit our website at www.newhollandconstruction.com Or, call toll-free: 1-866-726-3396

 **NEW HOLLAND**

Design, materials and/or specifications are subject to change without notice and without liability therefor. Specifications are applicable to units sold in Canada, the United States, its territories and possessions, and may vary outside these areas.

© 2005 CNH America LLC



Safety begins with a thorough understanding of the equipment. Always make sure you and your operators read the Operator's Manual before using the equipment. Pay close attention to all safety and operating decals and never operate machinery without all shields, protective devices and structures in place.

Stock #NHC4050507 • 110520 • PRINTED IN U.S.A.



NEW HOLLAND IS A BRAND OF CNH.

A GLOBAL LEADER FOR CONSTRUCTION EQUIPMENT, AGRICULTURE EQUIPMENT AND FINANCIAL SERVICES.