



# NEW HOLLAND

## CRAWLER DOZERS



D75 D85 D95

 **NEW HOLLAND**

[www.newholland.com](http://www.newholland.com)

# PERFORMANCE THAT INCREASES YOUR RETURN ON INVESTMENT

New Holland crawler dozers handle tasks more efficiently thanks to a long list of power and design advantages. Operators perform more efficiently with superior visibility, comfort, easy operation, and hassle-free servicing.

## Tremendous power

- Impressive pushing power
- Superior blade forces
- Industry-leading track forces

## Increased visibility and control

- An outstanding view from the operator's seat
- Spacious, comfortable operator compartment
- Low-effort steering, speed, and blade control
- Control sensitivity adjusts to each operator's preference

## Servicing ease

- Industry-leading SAE maintainability index
- Platform or cab tilts over for complete access to pumps and components
- Easy-clean undercarriage design
- Easy-open front grill and service panels provide access to service checkpoints from the ground, without tools
- Convenient sight glasses for fast fluid checks

**Ask your dealer for a demonstration to see how a New Holland crawler dozer can increase your return on investment.**



## Easy angle changes

With the optional variable pitch blade adjustment, it's easy to adjust the blade angle between the 52-degree carrying angle and the 60-degree cutting angle.





New Holland crawler dozers deliver an exceptional view to the blade cutting edge.



Easy-open service panels provide fast, convenient access to maintenance checkpoints.



Superior blade forces allow New Holland dozers to perform tough earth-moving jobs.



Superior track force and stability make these crawler dozers the perfect choice for land clearing.



#### More ground clearance

Ample ground clearance and a smooth belly design provide maximum mobility over treacherous terrain.



	D75	D85	D95
<b>Net horsepower @ 2,000 RPM</b>	75 hp (56 kW)	84 hp (63 kW)	96 hp (72 kW)
<b>Operating weight, lbs (kg)</b>			
LT (Long Track)	18,200 (8256)	18,900 (8573)	NA
XLT (Extra Long Track)	NA	NA	19,600 (8891)
WT (Wide Track)	18,900 (8573)	19,700 (8936)	20,200 (9163)
LGP (Low Ground Pressure)	19,400 (8800)	20,200 (9163)	20,700 (9390)
<b>Blade capacity, cu. yd. (m³)</b>			
LT (Long Track)	2.0 (1.5)	2.2 (1.6)	NA
XLT (Extra Long Track)	NA	NA	2.2 (1.8)
WT (Wide Track)	2.3 (1.8)	2.3 (1.8)	2.5 (1.9)
LGP (Low Ground Pressure)	2.6 (2.0)	2.6 (2.0)	2.7 (2.1)

## MOVE MORE DIRT PER HOUR

These state-of-the-art dozers maximize productivity with outstanding power and smooth, responsive hydraulic control.

#### Industry-leading push power and blade forces

- Larger-size hydrostatic components than similar-size dozers for higher pressures and higher flows
- Better track force and push power—especially at slow speeds
- Blade angle forces up to 31,000 pounds (14,061 kgf)
- Blade angle torque up to 85,250 foot-pounds (38,669 kgf)
- Work in the toughest ground conditions
- Perform difficult tasks such as dislodging tree stumps, foundations, and footers

#### Proven engines

- Reliable, fuel-efficient, turbocharged New Holland engines
- Cleaner-burning design benefits the environment
- Integral water pump and oil cooler
- Poly-V belt with automatic belt tensioning

#### Triple-reduction final drive

- Two helical-cut reductions plus planetary output provide longer life and reduced noise
- Exceptional ground clearance—unlike triple-reduction systems that use bull gears and pinions and place the output housing close to the ground

## BUILT-IN COMFORT, LOW-EFFORT CONTROL

Whether you prefer a ROPS model or the comfort of a heated and air-conditioned cab, you will appreciate the exceptional visibility and easy controls of a New Holland crawler dozer.

### **An outstanding view to the cutting edge**

- Sloped, tapered engine hood provides excellent visibility to the cutting edge
- Four front halogen lights and two in the rear for work in low-light conditions

### **The ultimate in operating ease**

- Steer and change speed and direction with one, low-effort lever
- Comfortable palm-grip lever provides complete blade control
- A friction control lock on the transmission lever acts as a cruise control to maintain forward or reverse travel speed

### **Respect for operator preferences**

- Three control sensitivity levels match different operating styles—adjust steering sensitivity, shuttle speed, and maximum transmission speed
- Turn a knob to set reverse shuttle speeds—from 80% to 130% of forward speeds

### **Spacious and comfortable**

- Plenty of leg and foot room, with high and low foot rests
- Deluxe mechanical suspension seat adjusts for height, fore and aft, lumbar support, thigh support, and backrest position
- Optional air-ride seat provides an even smoother ride



The instrument cluster provides system information with analog gauges and warning lights.



### **Single-lever transmission control**

Shift, turn, or change direction with your left hand. Push the lever fore and aft for infinitely variable speed between 0–6 mph. Two buttons on the lever allow you to bump up or down one level at a time with the touch of your thumb. Move the lever left or right to steer. Push the lever all the way to the left or right to counter-rotate the tracks and turn 180 degrees on the spot.



The palm-grip lever provides complete blade control.





A centralized hydraulic diagnostic test panel easily verifies system pressures.



The hinged front grill allows easy radiator and cooler cleanout.



**Easy-tilt platform**

New Holland's tilt-over cab/platform provides quick, unmatched service access to hydraulic pumps and powertrain components.

# TIME-SAVING SERVICING

New Holland crawler dozers have the leading SAE point score for periodic maintenance compared to other dozers. That means less time and money maintaining your equipment and more time on the job making money.

## Fast routine maintenance

- Maintenance points are conveniently grouped together
- Engine and service compartment panels are easy to open from the ground and without tools
- Hydraulic sight glass, radiator sight bubble, and coolant bottle provide easy fluid-level checks with a quick glance
- Filters are easy to reach and change—including spin-on, vertically mounted hydraulic filters that can be reached through a hinged door

## Easy undercarriage and track cleanout

- No-hassle cleaning even after operating in sticky, muddy, or freezing conditions
- The open final drive area and open chassis design provide a large escape route for rocks and mud
- Steep-angle covers on the track frame and streamlined track frame supports shed dirt easily

## Sealed and Lubricated Track (SALT) chain

- Substantially reduces track wear to extend track life
- Reduces noise levels
- Four springs and cast-steel buttons keep the idler tight to the track frame
- Standard clipped shoes aid turning, reduce track binding and minimize damage to concrete or asphalt when turning

## Onboard diagnostics

- Simplifies trouble-shooting and minimizes costly downtime
- A diagnostic pressure test panel and a cab-accessible electrical system diagnostic display provide fault codes to spot potential problems quickly



An industry-leading SAE maintainability index means that a crawler dozer from New Holland takes less time and effort to service than other models on the market.



For forest and land clearing work, add guarding options including operator compartment screens.

Wide-track machines are ideal for forestry operations, where ground conditions are relatively firm, but the machine regularly works on steep slopes.



You can adjust PAT blade lift, angle, and tilt hydraulically to match the task at hand—finish grading, ditching, backfilling, or spreading.



## TRACKS AND ATTACHMENTS TO MATCH YOUR APPLICATIONS

New Holland crawler dozers are available in three different track configurations—LT/XLT, WT, or LGP. Select the undercarriage version that works best for your operation.

### LT or XLT (Long Track)

- Standard with a narrow track gauge and narrow track shoes
- Typically used for firm ground conditions and where there is minimal slope work
- Favored when the focus is on maximum tractive effort and less focus on lateral stability
- Delivers the highest ground pressure

### WT (Wide Track)

- An intermediate choice between the LT and LGP
- Use for firm ground conditions, but in sloped areas that need additional lateral stability
- Similar tracks shoes to the LT, but the track gauge is expanded to the width of the LGP

### LGP (Low Ground Pressure)

- Wider track gauge and wider, center-mounted track shoes
- Low ground pressure for better flotation in soft, swampy ground conditions
- Provides maximum lateral stability

### Power angle and tilt (PAT) blades

- Versatile to handle a wide range of tough jobs
- Available blade widths of 98, 104, 110, 120, 124, or 130 inches

### Equipped for versatility

- A multi-function control valve makes it easy to add and control attachments or auxiliary equipment
- Mechanical PTO powers attachments such as winches
- Standard retrieval hitch or optional two-position drawbar

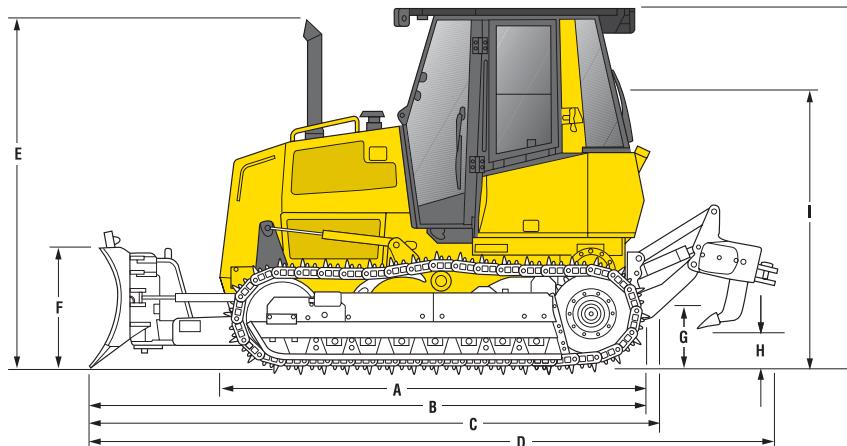
### Optional attachments

- Parallelogram high-clearance ripper rips up to 14.3 inches (363 mm) deep in difficult terrain like rock or hard-packed soil
- Allied Systems winch provides swift, secure movement of large objects, such as felled trees

### Accessories for special applications

- Rear screen
- Brush guards
- Side forestry screens
- Severe-duty radiator guard

# D75 D85 D95 specifications



DIMENSIONS	D75	D85	D95
<b>A.</b> Overall length, no blade, no rear equip, SALT chain	121.1" (3076 mm)	124.1" (3153 mm)	128.5" (3263 mm)
<b>B.</b> Overall length, blade straight, no rear equip	162.4" (4126 mm)	164.2" (4171 mm)	167.6" (4258 mm)
<b>C.</b> Overall length, blade straight, w/drawbar	168.3" (4276 mm)	170.2" (4322 mm)	173.5" (4408 mm)
<b>D.</b> Overall length, blade straight, w/ripper	200.8" (5101 mm)	202.6" (5147 mm)	206.0" (5233 mm)
<b>E.</b> Top of exhaust stack	105.6" (2683 mm)	105.6" (2683 mm)	105.6" (2683 mm)
<b>F.</b> Blade height	36" (914 mm)	36" (914 mm)	36" (914 mm)
<b>G<sup>1</sup>.</b> Ground clearance at belly pans	15.1" (383 mm)	14.9" (379 mm)	14.9" (379 mm)
<b>G<sup>2</sup>.</b> Ground clearance at drawbar*	17.7" (450 mm)	17.7" (450 mm)	17.7" (450 mm)
<b>G<sup>3</sup>.</b> Centerline of drawbar opening*	19.9" (506 mm)	19.9" (506 mm)	19.9" (506 mm)
<b>H.</b> Shank height (transport position)	17.3" (440 mm)	17.3" (440 mm)	17.3" (440 mm)
<b>I.</b> Top of seat headrest	87.8" (2229 mm)	87.8" (2229 mm)	87.8" (2229 mm)
<b>J<sup>1</sup>.</b> Height of cab w/o air conditioning	109.2" (2773 mm)	109.2" (2773 mm)	109.2" (2773 mm)
<b>J<sup>2</sup>.</b> Height of cab w/air conditioning	109.8" (2788 mm)	109.8" (2788 mm)	109.8" (2788 mm)
<b>J<sup>3</sup>.</b> ROPS height	109.2" (2773 mm)	109.2" (2773 mm)	109.2" (2773 mm)

Note: Overall length is with blade pitch at 55° (factory setting). If blade pitch is adjusted to 60° length will decrease 15 mm (0.6 inches).

Note: Ground clearance and overall height dimensions are with the grouser fully penetrated per SAEJ1234. Add 52.5 mm (2.06 inches) if unit is on solid surface.

\*Dimensions are with drawbar in "high-ride" position. If drawbar is flipped to "low-ride" position ground clearance is 374 mm (14.7 inches) and centerline of drawbar opening is 430 mm (16.9 inches).

TRANSPORT WIDTH	D75	D85	D95
Width w/blade at max angle, ft/in (mm)	<b>LT</b> 7' 7" (2310) <b>WT</b> 8' 6" (2590) <b>LGP</b> 9' 6" (2900)	<b>LT</b> 8' 0" (2440) <b>WT</b> 8' 6" (2590) <b>LGP</b> 9' 6" (2900)	<b>XLT</b> 8' 6" (2590) <b>WT</b> 9' 3" (2820) <b>LGP</b> 10' 0" (3050)

OPERATING WEIGHT	D75	D85	D95
Operating weight, lbs (kg)	<b>LT</b> 18,200 (8256) <b>WT</b> 18,900 (8573) <b>LGP</b> 19,400 (8800)	<b>LT</b> 18,900 (8573) <b>WT</b> 19,700 (8936) <b>LGP</b> 20,200 (9163)	<b>XLT</b> 19,600 (8891) <b>WT</b> 20,200 (9163) <b>LGP</b> 20,700 (9390)

ENGINE	D75	D85	D95
Make and model	New Holland 445T/M2	New Holland 445T/M2	New Holland 667T/M2
Gross power @ RPM, hp (kW)	80 (60) @ 2000	89 (67) @ 2000	99 (74) @ 2000
Net power @ RPM, hp (kW)	75 (56) @ 2000	84 (63) @ 2000	96 (72) @ 2000
Peak torque (gross), lb-ft (N-m) @ RPM	265 (360) @ 1400	295 (400) @ 1400	325 (441) @ 1200
Number of cylinders	4	4	6
Displacement, cubic in (l)	275 (4.5)	275 (4.5)	409 (6.7)
Bore x stroke, in (mm)	4.02 x 4.72 (102 x 120)	4.02 x 4.72 (102 x 120)	4.02 x 4.72 (102 x 120)
Cooling type	Water	Water	Water

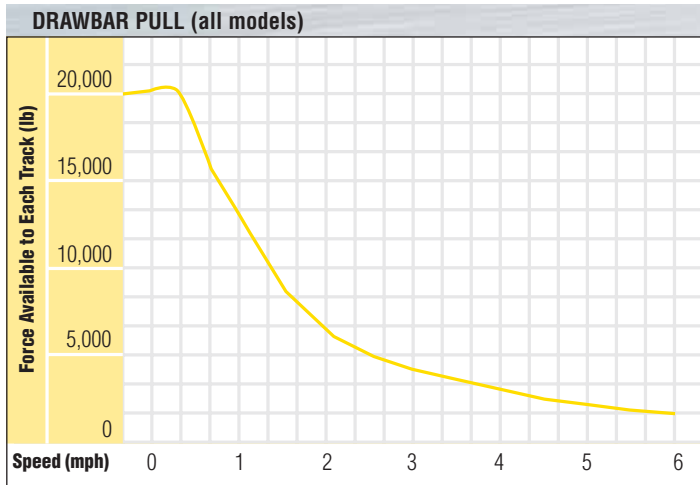
# D75 D85 D95 Specifications

TRANSMISSION (all models)	
Transmission type .....	Hydrostatic
Travel speed .....	Infinitely variable between 0 to 6 mph (9.7 kph)
No. of speeds .....	10
Drawbar pull at stall, lbf (kN) .....	40,000 (143.9)
Steering system type .....	Dual-path hydrostatic
Final drive type .....	Triple reduction w/planetary
Parking brake type .....	SAHR (spring applied, hydraulically released)

HYDRAULIC SYSTEM (all models)	
Main pump type .....	Gear
Total flow, gpm (l/min) .....	20.3 (76.8)

RIPPER (all models)	
Type Parallelogram	
Ripping depth .....	14.3 in. (363 mm)
Shank holders .....	5
Shanks included .....	3
Weight (with three shanks) .....	1,400 lb. (635 kg)

ELECTRICAL (all models)	
System .....	12 volt, negative ground
Battery .....	one 650 CCA (160 Ah) standard, two optional
Alternator .....	65 amp (ROPS), 95 amp (Cab)



BLADE			
	D75 Track Configuration		
	LT	WT	LGP
Blade type	6-way (PAT)	6-way (PAT)	6-way (PAT)
Blade capacity, cubic yd (m³)	2.0 (1.53)	2.32 (1.77)	2.60 (1.99)
Blade width, in (mm)	98 (2490)	110 (2790)	120 (3050)
Blade height, in (mm)	36 (910)	36 (910)	36 (910)
Blade depth below ground, in (mm)	18 (457)	18 (457)	18 (457)
Blade lift above ground, in (mm)	36 (914)	36 (914)	36 (914)
Blade angle, L/R each direction, degrees	25° / 25°	25° / 25°	25° / 25°
Blade tilt, in (mm)	14.2 (360)	15.9 (400)	17.9 (450)
Blade pitch	55 deg. (opt. adj. 52–60)	55 deg. (opt. adj. 52–60)	55 deg. (opt. adj. 52–60)
	D85 Track Configuration		
	LT	WT	LGP
Blade type	6-way (PAT)	6-way (PAT)	6-way (PAT)
Blade capacity, cubic yd (m³)	2.16 (1.65)	2.32 (1.77)	2.60 (1.99)
Blade width, in (mm)	104 (2640)	110 (2790)	124 (3150)
Blade height, in (mm)	36 (910)	36 (910)	36 (910)
Blade depth below ground, in (mm)	19 (483)	19 (483)	19 (483)
Blade lift above ground, in (mm)	34.4 (874)	34.4 (874)	34.4 (874)
Blade angle, L/R each direction, degrees	25° / 25°	25° / 25°	25° / 25°
Blade tilt, in (mm)	15 (380)	15.9 (400)	17.9 (450)
Blade pitch	55 deg. (opt. adj. 52–60)	55 deg. (opt. adj. 52–60)	55 deg. (opt. adj. 52–60)
	D95 Track Configuration		
	XLT	WT	LGP
Blade type	6-way (PAT)	6-way (PAT)	6-way (PAT)
Blade capacity, cubic yd (m³)	2.16 (1.65)	2.52 (1.93)	2.73 (2.09)
Blade width, in (mm)	104 (2640)	120 (3050)	130 (3300)
Blade height, in (mm)	36 (910)	36 (910)	36 (910)
Blade depth below ground, in (mm)	19 (483)	19 (483)	19 (483)
Blade lift above ground, in (mm)	34.4 (874)	34.4 (874)	34.4 (874)
Blade angle, L/R each direction, degrees	25° / 25°	25° / 25°	25° / 25°
Blade tilt, in (mm)	15.9 (400)	17.3 (440)	18.8 (480)
Blade pitch	55 deg. (opt. adj. 52–60)	55 deg. (opt. adj. 52–60)	55 deg. (opt. adj. 52–60)

# D75 D85 D95 specifications

<b>UNDERCARRIAGE</b>			
	<b>D75 Track Configuration</b>		
	<b>LT</b>	<b>WT</b>	<b>LGP</b>
Shoe width, in (mm)	16 (410)	20 (510)	25 (640)
No. of shoes	38	38	38
No. of upper rollers	1	1	1
No. of bottom rollers	6	6	6
Link pitch, in (mm)	6.73 (171)	6.73 (171)	6.7 (171)
Sealed and lubed track	Standard	Standard	Standard
Length of track on ground, in (mm)	88 (2240)	88 (2240)	88 (2240)
Track gauge, in (mm)	57 (1450)	67 (1700)	67 (1700)
Track rollers (per track)	6	6	6
Carrier rollers (per track)	1	1	1
Shoe grouser height	2.06 (52.3 mm)	2.06 (52.3 mm)	2.06 (52.3 mm)
Ground pressure, psi (kpa)	6.47 (44.61)	5.36 (36.96)	4.43 (30.54)
	<b>D85 Track Configuration</b>		
	<b>LT</b>	<b>WT</b>	<b>LGP</b>
Shoe width, in (mm)	18 (460)	24 (610)	28 (710)
No. of shoes	39	39	39
No. of upper rollers	1	1	1
No. of bottom rollers	6	6	6
Link pitch, in (mm)	6.73 (171)	6.73 (171)	6.7 (171)
Sealed and lubed track	Standard	Standard	Standard
Length of track on ground, in (mm)	89 (2260)	89 (2260)	89 (2260)
Track gauge, in (mm)	62 (1570)	70 (1780)	70 (1780)
Track rollers (per track)	6	6	6
Carrier rollers (per track)	1	1	1
Shoe grouser height	2.06 (52.3 mm)	2.06 (52.3 mm)	2.06 (52.3 mm)
Ground pressure, psi (kpa)	5.88 (40.54)	4.61 (31.78)	4.04 (27.85)
	<b>D95 Track Configuration</b>		
	<b>XLT</b>	<b>WT</b>	<b>LGP</b>
Shoe width, in (mm)	18 (460)	24 (610)	28 (710)
No. of shoes	40	40	40
No. of upper rollers	1	1	1
No. of bottom rollers	7	7	7
Link pitch, in (mm)	6.7 (171)	6.7 (171)	6.7 (171)
Sealed and lubed track	Standard	Standard	Standard
Length of track on ground, in (mm)	93 (2360)	93 (2360)	93 (2360)
Track gauge, in (mm)	62 (1570)	70 (1780)	70 (1780)
Track rollers (per track)	7	7	7
Carrier rollers (per track)	1	1	1
Shoe grouser height	2.06 (52.3 mm)	2.06 (52.3 mm)	2.06 (52.3 mm)
Ground pressure, psi (kpa)	5.82 (40.13)	4.54 (31.30)	4.00 (27.58)
<b>SERVICE CAPACITIES</b>			
	<b>D75</b>	<b>D85</b>	<b>D95</b>
Crankcase with filter	14.4 qt. (13.6 L)	14.4 qt. (13.6 L)	16.7 qt. (15.8 L)
Crankcase w/o filter	13.5 qt. (12.8 L)	13.5 qt. (12.8 L)	15.9 qt. (15.0 L)
Coolant	5 gal. (18.9 L)	5 gal. (18.9 L)	5 gal. (18.9 L)
Fuel tank	50 gal. (189.3 L)	50 gal. (189.3 L)	50 gal. (189.3 L)
Transmission & hydraulic oil	20 gal. (75.7 L)	20 gal. (75.7 L)	20 gal. (75.7 L)
Final drive (each)	15 qt. (14.2 L)	15 qt. (14.2 L)	15 qt. (14.2 L)
Track roller (each)	0.19 qt. (0.18 L)	0.26 qt. (0.25 L)	0.26 qt. (0.25 L)
Front idler (each)	0.42 qt. (0.4 L)	0.52 qt. (0.49 L)	0.52 qt. (0.49 L)
Carrier roller (each)	0.25 qt. (0.24 L)	0.25 qt. (0.24 L)	0.25 qt. (0.24 L)
SALT tracks (each pin)	0.8 oz. (23.7 mL)	0.8 oz. (23.7 mL)	0.8 oz. (23.7 mL)

# D75 D85 D95 Base & Optional Equipment

## BASE EQUIPMENT

### ENGINE

New Holland Tier 2  
 Air Cleaner: Dry type, 2/stage radial seal  
 Turbine-style precleaner  
 Anti-freeze solution to -34°F  
 Fan, Pusher  
 Fuel Tank: 50 gal. (US)  
 Hand Throttle  
 Radiator: Anti-sandblast

### HYDRAULICS

Open/Center Hydraulic System  
 Three/Spool Control Valve  
 Low/Effort T-Handle-Style Blade Control

### TRANSMISSION

Dual-path infinitely variable Hydrostatic Transmission (0 to 6 mph)  
 Decelerator pedal with automatic transmission speed retardation  
 Center Brake Pedal: Modulates transmission retardation and applies parking brake  
 Hydrostatic Braking  
 Final Drives: Triple reduction, two helical & one planetary gear reduction  
 Single/Lever Transmission Control w/infininitely variable control of speed by fore/aft movement of the lever  
 Fwd./Rev. speed is maintained by an adjustable hold capability  
 Steering is accomplished by moving the joystick left or right and is proportionate to the amount of lever movement  
 Counter-rotation can be obtained w/full travel of the joystick either right or left  
 Reverse Speed Ratio Control: Four/point position switch adjusts reverse speeds as percentage of forward speed (80/100/115/130 percent)

### ELECTRICAL

65 Amp Alternator  
 12-Volt System  
 Back-Up Alarm  
 Master Disconnect Switch  
 Fuse Circuit Protection  
 Four front lights & Two rear lights  
 Two Auxiliary 12V power ports

### OPERATOR STATION

ROPS Canopy  
 Park Brake: spring/applied hydraulic/released  
 Horn  
 Lockout Levers: Neutralizes transmission, applies parking brake  
 Adjustable Armrests  
 High and Low Foot Rests  
 Lunch Box Area  
 Operator Manual Storage  
 Suspension Seat with 2" Seat Belt  
 Mirror  
 Floor Mat  
 Headliner  
 Decelerator Pedal

### INSTRUMENTS

Gauges:  
 Tachometer (Digital)  
 Hour Meter (Digital)  
 Diagnostic Service Reminder (Digital)  
 Engine Coolant Temperature  
 Transmission Oil Temperature  
 Transmission Speed Indicator  
 Voltmeter  
 Warning Lights:  
 Air Filter Restriction  
 Battery Charge  
 Diagnostic Fault Indicator  
 Engine Oil Pressure  
 Engine Coolant Temperature  
 Fuel Level  
 Hydraulic Oil Filter Restriction  
 Parking Brake  
 Service  
 Transmission Charge Pressure  
 Transmission Temperature  
 Warning (Audible) Indicators:  
 Engine Coolant Temperature  
 Engine Oil Pressure  
 Low/Fuel Level  
 Transmission Charge Pressure

### MAIN FRAME

Full Belly Guards  
 Front Pull Hook  
 Engine Side Panels: Perforated Muffler  
 Self/Storing Anti-vandal Lock/Up Protection  
 Integral Final Drive Seal  
 Hinged Grill  
 Fixed 55° Blade Pitch  
 Retrieval Hitch

### UNDERCARRIAGE

Guards: Track Guiding, front and rear  
 Hydraulic Track Adjusters  
 Sealed and Lubricated Track (SALT) w/Master Link  
 Track Adjuster Guard  
 Track and Carrier Rollers permanently sealed and lubricated  
 Heavy/Duty Track Covers

## OPTIONAL EQUIPMENT

### OPERATOR STATION

Cab with heater and air conditioning  
 Seatbelt, 3"  
 Seat, Deluxe, vinyl air suspension (For ROPS only)

### ENGINE

Fan, reversible (Not for use with cab)  
 Cold start aid, grid heater

### HYDRAULIC

Hydraulic Pump w/PTO  
 Hydraulic Valve, 4 spool in lieu of 3 spool (for field-installed ripper, included in factory/installed ripper)

### ELECTRICAL

Dual Battery

### UNDERCARRIAGE

Multiple/size grouser shoes 16"-28"  
 Relieved Drive Sprocket (for packing soil conditions)  
 Center Rock Guards

### SERVICE

Tool box  
 Environmental drains (includes valve and drain hose for coolant, fuel and hydraulic reservoirs)  
 Radiator Brush

### SAFETY

Rear screen  
 Side forestry screens for ROPS (requires Brush Guard and ROPS Rear Screen)  
 Brush Guards

### ATTACHMENTS & ACCESSORIES

Three-shank ripper  
 Multiple blade widths 98"-130"  
 Variable pitch link for blade  
 Front counterweight and pull hook  
 Drawbar

## CRAWLER DOZERS

### D75

Horsepower  
Net 75 hp (56 kW) @ 2000

Operating weight  
LT: 18,200 lbs (8256 kg)  
WT: 18,900 lbs (8573 kg)  
LGP: 19,400 lbs (8800 kg)

Blade capacity  
LT: 2.0 cu. yd. (1.5 m<sup>3</sup>)  
WT: 2.3 cu. yd. (1.8 m<sup>3</sup>)  
LGP: 2.6 cu. yd. (2.0 m<sup>3</sup>)

### D85

Horsepower  
Net 84 hp (63 kW) @ 2000

Operating weight  
LT: 18,900 lbs (8573 kg)  
WT: 19,700 lbs (8936 kg)  
LGP: 20,200 lbs (9163 kg)

Blade capacity  
LT: 2.2 cu. yd. (1.6 m<sup>3</sup>)  
WT: 2.3 cu. yd. (1.8 m<sup>3</sup>)  
LGP: 2.6 cu. yd. (2.0 m<sup>3</sup>)

### D95

Horsepower  
Net 96 hp (72 kW) @ 2000

Operating weight  
XLT: 19,600 lbs (8891 kg)  
WT: 20,200 lbs (9163 kg)  
LGP: 20,700 lbs (9390 kg)

Blade capacity  
XLT: 2.2 cu. yd. (1.6 m<sup>3</sup>)  
WT: 2.5 cu. yd. (1.9 m<sup>3</sup>)  
LGP: 2.7 cu. yd. (2.1 m<sup>3</sup>)



## New Holland Construction Equipment Dealers are committed to your success

Your New Holland construction equipment dealer can match you with the best equipment for your operation. Your productivity is their goal and your profitability is their priority.

Providing dependable, efficient construction equipment is only the beginning. Your dealer can also make it easier to put New Holland construction equipment to work on your job site by tailoring low-rate financing, lease programs and insurance plans to meet your needs.

After the sale your dealer provides peace of mind with expert parts and service support. Factory-trained technicians will service your equipment promptly and maintain your investment.

Visit your New Holland construction equipment dealer and see for yourself why New Holland is a rapidly growing force in the construction equipment industry.



New Holland construction equipment is backed with a **1-Year Unlimited-Hour Standard Warranty\***

Visit our website at [www.newholland.com](http://www.newholland.com) Or, call toll-free: 1-866-726-3396

 **NEW HOLLAND**

\*Mid-size and full-size excavators feature 1-year/2,000 hour standard warranties.

Design, materials and/or specifications are subject to change without notice and without liability therefor. Specifications are applicable to units sold in Canada, the United States, its territories and possessions, and may vary outside these areas.

© 2007 CNH America LLC  
New Holland is a trademark of CNH America LLC.



Safety begins with a thorough understanding of the equipment. Always make sure you and your operators read the Operator's Manual before using the equipment. Pay close attention to all safety and operating decals and never operate machinery without all shields, protective devices and structures in place.

Stock #NHC1100704 • 010720 • GP • PRINTED IN U.S.A.

[www.newholland.com](http://www.newholland.com)