

# New Holland 13-foot Discbine® Header 2353



New Holland introduces a new header choice for the HW “5 Series” Speedrower™ self-propelled windrowers—the new 10-disc 2353 Discbine® disc header. This new model header matches with both the HW345 and HW365 windrower models

### **The benefits of a narrow width**

Delivering a narrower 13-foot cut with each pass, the 2353 is the perfect choice for haymakers working in climates where high relative humidity makes drydown difficult. The narrower operating and transport width also make it easier to maneuver in smaller fields and on narrow roadways and lanes.

### **Proven modular disc design**

You get peace of mind with the New Holland designed and built modular cutterbar. Each disc is an independent module, complete with its own sealed oil bath and hardened alloy drive shafts, which allows for easy repair or replacement if necessary.

### **Additional 2353 Discbine® header features:**

- Knives travel at 3000 rpm to slice through dense, wet crops, fire ant hills or gopher mounds.
- Knives are reversible for twice the cutting life.
- Wide 102-inch chevron-design rolls condition crop thoroughly.
- Torsion-bar system maintains constant roll pressure for consistent conditioning, yet releases to allow “slugs” of heavy material to pass through.
- A simple hand crank allows you to adjust conditioning roll pressure.
- Easy adjustment of roll gap requires only one wrench and is performed from the top side of header.

# New Holland 2353 Discbine® Header Specifications

Model	2353 Diskbine® Header
<b>Cutter Bar</b>	
Cutting Width, in. (mm)	156 (3906)
Cutting Height, in. (mm)*	.6 - 3.11(15-79)
Cutter Bar Tilt Angle, Degrees	minus 2° to minus 12°
Cutter Bar Type	modular w/individual oil sumps
Number of Discs	10
# of Reversible, Swingaway Knives per Disc	2
Disc Cutting Diameter, in. (mm)	19.7 (500)
Disc Drive Type	bevel gears in sealed module
Maximum Disc Speed, Rpm	3,000
Knife Tip Speed, mph (kph)	187 (301)
<b>Header Drive:</b>	
Cutterbar Input Drive	Hydrostatically Driven w/2, 3-CID hyd motors
Drive Pressure, psi- Forward/Reverse	5000/5500
<b>Conditioner:</b>	
Conditioner Drive	4HB v-belt, enclosed gears w/u-joints
Conditioner Type	intermeshing rolls
Roll Type	molded rubber w/intermeshing chevron lugs
Roll Length, in. (mm)	102 (2591)
Roll Diameter, in. (mm)	10.4 (264)
Roll Speed, Rpm @ Full Cutterbar speed	920
Roll Tensioning	Torsion-bar roll pressure system adjusts with a single crank, rolls separate automatically on-the-go to allow thick material to pass
Roll Gap	Adjustable, with stop bolt
Windrow/swath width min/max, in. (mm)	36-96 (910-2438)
<b>Dimensions:</b>	
Overall Width, in. (mm)	159 (4039)
Length, in. (mm)	70.9 (1800)
Ground Clearance to skid shoe, in. (mm)*	22 (558) max tilt 24.5 (622) min tilt
Weight, Lb (Kg):	3100 (1406)
<b>Parking Stand:</b>	
	Standard, flip-down
<b>Field-Installed Options:</b>	
	Crop Dividers, High Stubble Kit, Corner Marker Kit, Push Bar
<b>Windrower Compatibility:</b>	
Models	HW345, HW365
Tire Sizes	All 18.4 tires, 21L x 28 R4**

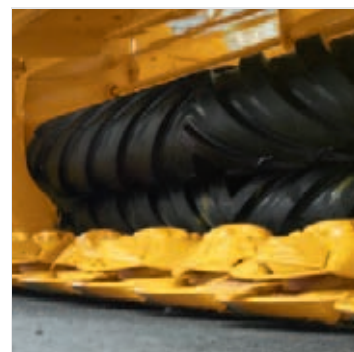
\* With 18.4 x 26 tires

\*\* Windrowers equipped with 21L x 28 R4 tires have an overall width (outside-to-outside of tires) of 152.3".

Header cut width is 156".

Windrowers equipped with 23.1 x 26 tires have an overall width (outside to outside of tires) of 156". Header cut width is 156".

Not recommended.



## YOUR NEW HOLLAND DEALER

Visit our Web site at [www.newholland.com/na](http://www.newholland.com/na) Or, call toll-free: 1-888-290-7377



NEW HOLLAND

Design, materials and/or specifications are subject to change without notice and without liability therefor. Specifications are applicable to units sold in Canada, the United States, its territories and possessions, and may vary outside these areas.

© 2006 CNH America LLC  
New Holland is a registered trademark of CNH America LLC.



Safety begins with a thorough understanding of the equipment. Always make sure you and your operators read the Operator's Manual before using the equipment. Pay close attention to all safety and operating decals and never operate machinery without all shields, protective devices and structures in place.

NH6280602 · 070605 · IS · PRINTED IN U.S.A.